

StormCube^{FH}

Advanced Full Height Cubicle Systems



PRODUCT TECHNICAL STATEMENT

Specifics about the system

- Rigid aluminium framework creating a robust system.
- Suitable for high use and abuse environments.
- Bull nosed edges and radius edges on doors to prevent injury to users.
- Our partitions are fixed to the walls at multiple locations using a full height U-channel. Please allow for a stud or full height fixings in the wall at every location where the partitions meet the wall.

Panel Information

- All Antibac panels are sourced from an ISO 9001 approved company.
- All panels are made to International Standards EN 438-2: 2005.
- No halogen, biocides, pesticides, heavy metals (e.g. lead, cadmium, chromiumVI, mercury), or plasticisers are used in the production of AntiBac panels.
- Virgin raw materials are used in the manufacture of all Antibac panels.
- All kraft paper used in the manufacture of Antibac panels is sourced from renewable forests.
- All Antibac panels are Greenguard certified and will contribute to points in the Greenstar rating system.
- All panels are anti-microbial and will actively kill 99.99% of bacteria, fungi and viruses within 24 hours.
- We offer a 10 year guarantee on panel integrity.

Panel Colour Options

StormCube-FH is available in:

- 12 AntiBac stock colours
- 81 AntiBac Designer colours – 14 week lead time
- 16 Laminex colours

For a full list go to:

www.resco.co.nz/colours

Aluminium information

- **HEAD RAIL:** Interpon powder coated rectangular 80mm x 40mm extruded aluminium 6060 alloy A-850 headrail or if full height to the ceiling Dulux powder coated 24mm x 24mm extruded aluminium 6060 alloy 8555-5700 channel.
- **WALL CHANNELS:** Interpon powder coated continuous full height 42mm x 20mm extruded aluminium 6060 alloy A-866 wall channels.
- **DOOR STILES:** Interpon powder coated 50mm extruded aluminium 6060 alloy full length tubular A-855 door stiles with clashing rebated door stops lined with wool pile. These also act as the pedestal with the top of door stiles to be screw fixed to headrail and fixed to floor pin and bracket.

Aluminium Colour Options

The StormCube-FH aluminium extrusions are available in any of the Interpon powder coating colour range or Silver Anodising. Our standard colour is Silver Pearl.

Building Code Compliance

B2.3.1 Durability

Resco's products exceed requirements. Our systems are made using Compact Laminate panels that have 10 year warranty,

however we expect these panels to have a serviceable life of 20+ years. (Examples: Orewa top 10 Holiday Park & Waikato Stadium - over 20 years old).

E3.2, E3.3.4 Internal Moisture

Resco's products comply with these requirements. Our products are made from panels that have silver-ion technology. Panels actively kill up to 99% of bacteria within 2 hours for the life of the panel. The panels are waterproof and perfect for wet areas. (Tested to ISO 22196:2011, EN 438 4:2005)

G1.3.2 Personal Hygiene

Resco's products comply with these requirements. The design of Resco systems are unique, they have fewer dirt traps, improved privacy and easier to clean.

Greenstar V3.1 - MAT-4

Improves interior air quality by reducing VOC and Formaldehyde emissions. (Greenguard gold certification).

Living Building Challenge

Resco's Antibac panels are free of the ingredients appearing in the Red List Summary of the Living Building Challenge (Supplier declaration).

NZBC CVM2/AS2-AS7

Resco's panels are suitable for application in rooms with intermittent use. We typically propose our systems in toilet and shower blocks. (BRANZ testing FH 5110 - Group 3 rating).

PRODUCT TECHNICAL STATEMENT

Hardware information

OPTION 1: Resco Anti-Microbial Moda Slidelock & Indicator Set

Material

- Diecast Zinc, Alloy ZP3.
- Brass Hinge Shaft with Nylon Inserts.
- ABS Snap on Covers.
- Stainless steel.

Finish

- High Gloss Antimicrobial Thermoset enamel Coated in grey.

Mounting

- Concealed Screw Fix.
- Surface Mounted.

Features

- Gravity assisted door opening/door closing.
- 3x Stainless steel hinges to suit door.
- Can be set to Hold Open / Hold Closed.
- 1 x Matching Doorstop/Coathook.
- 1 x Easy-Glide Slide Lock for restricted hand mobility, limb loss and hygiene.
- Raised directional arrows.
- Deemed to satisfy Disability Standard AS1428.1
- Universal system provides design uniformity.

OPTION 2: Resco Black Hardware

Material

- Diecast Zinc, Alloy ZP3.
- Brass Hinge Shaft with Nylon Inserts.
- ABS Snap on Covers.

Finish

- Black Coated.

Mounting

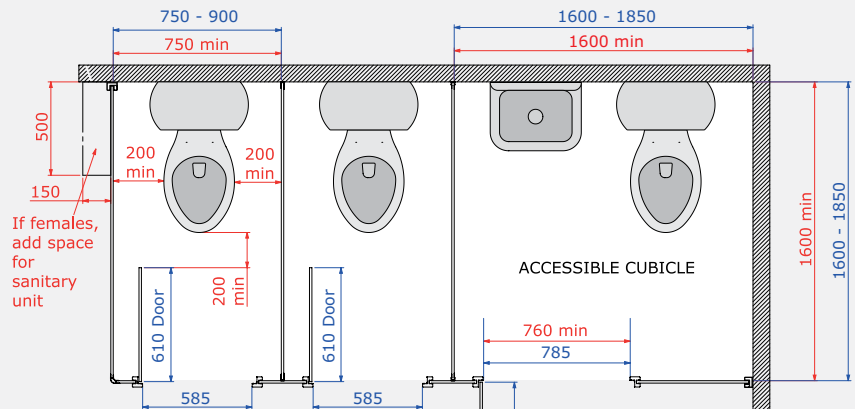
- Concealed Screw Fix.
- Surface Mounted.

Features

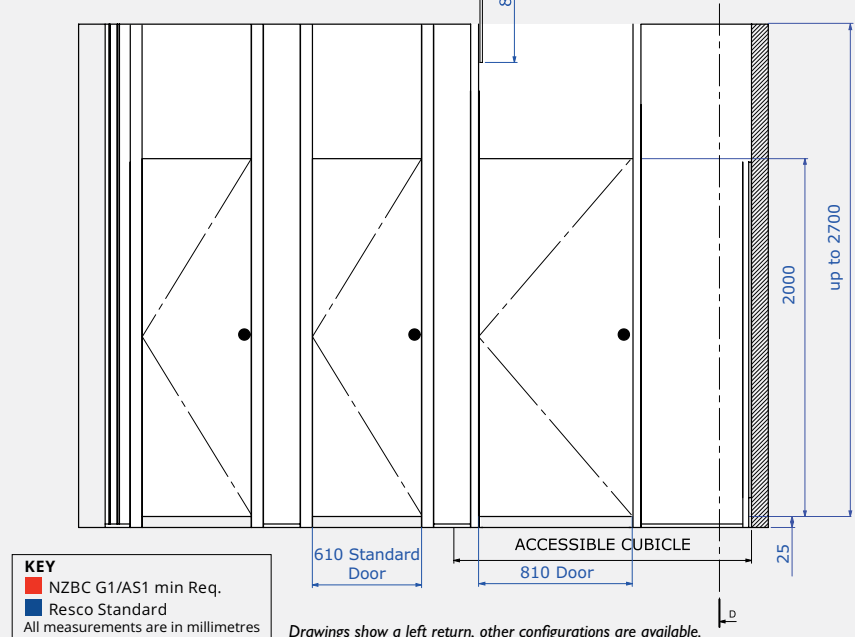
- Gravity assisted door opening/door closing.
- 3 x Stainless steel hinges to suit door.
- Can be set to Hold Open / Hold Closed.
- 1x Matching Doorstop/Coathook.
- 1x Easy-Glide Slide Lock for restricted hand mobility, limb loss and hygiene.
- Raised directional arrows.
- Deemed to satisfy Disability Standard AS1428.1
- Universal system provides design uniformity.

For CAD drawings go to: www.resco.co.nz/stormcube-fh

Plan View



Front View



Dimension details

As cubicles are custom made to your measurements, depths and widths can be varied to suit, while complying with the NZ building code.

The StormCube-FH standard dimensions are:

- Height 2400mm with 0 -160mm floor clearance.
- Depth 1600mm-1900mm (1900mm for accessible).
- Standard cubicles are recommended in an open-in door option.
- Standard cubicle doors are 610mm (opening is 585mm).
- Accessible cubicle doors are 810mm (opening is 785mm).
- Sliding doors are also available.

Warranty information

Our standard warranties are:

- 10 years Compact Laminate panel integrity.
- 2 years on hardware.
- 2 years on workmanship.

RESOCO

Ablution Solutions

For further information contact Customer Services on 0800 800 950 or www.resco.co.nz.