

# Series 5000 FH

Standard Full Height Cubicle Systems

## PRODUCT TECHNICAL STATEMENT



### Specifics about the system

- Full height wall channels.
- Optimised privacy with flush in-line doors and rebated edges.
- Our partitions are fixed to the walls at multiple locations using a full height U-channel. Please allow for a stud or full height fixings in the wall at every location where the partitions meet the wall.

### Panel Information

- All Antibac panels are sourced from an ISO 9001 approved company.
- All panels are made to International Standards EN 438-2: 2005.
- Virgin raw materials are used in the manufacture of all Antibac panels.
- All kraft paper used in the manufacture of Antibac panels is sourced from renewable forests.
- All Antibac panels are Greenguard certified and will contribute to points in the Greenstar rating system.
- All panels are anti-microbial and will actively kill 99.99% of bacteria, fungi and viruses within 24 hours.
- We offer a 10 year guarantee on panel integrity.

### Panel Colour Options

The Series 5000-FH is available in:

- 12 AntiBac stock colours
- 81 AntiBac Designer colours – 14 week lead time
- 16 Laminex colours

For a full list go to:

[www.resco.co.nz/colours](http://www.resco.co.nz/colours)

### Aluminium information

- HEAD RAIL: Interpon powder coated oval 40mm x 20mm extruded aluminium 6060 alloy X-884 headrail or if full height to the ceiling Dulux powder coated 25mm x 25mm extruded aluminium 6060 alloy 8555-5700 channel.
- WALL CHANNELS: Interpon powder coated continuous full height 42mm x 20mm extruded aluminium 6060 alloy A-866 wall channels or Dulux powder coated 24mm x 24mm extruded aluminium 6060 alloy 8555-5700 channel.

### Aluminium Colour Options

The Series 5000-FH aluminium extrusions are available in any of the Interpon powder coating colour range or Silver Anodising. Our standard colour is Silver Pearl.

### Building Code Compliance

#### B2.3.1 Durability

Resco's products exceed requirements. Our systems are made using Compact Laminate panels that have 10 year warranty, however we expect these panels to have a serviceable life of 20+ years. (Examples: Orewa top 10 Holiday Park – over 20 years old & Waikato Stadium - over 16 years old).

### E3.2, E3.3.4 Internal Moisture

Resco's products comply with these requirements. Our products are made from panels that have silver-ion technology. Panels actively kill up to 99% of bacteria within 2 hours for the life of the panel. The panels are waterproof and perfect for wet areas. (Tested to ISO 22196:2011, EN 438 4:2005)

#### G1.3.2 Personal Hygiene

Resco's products comply with these requirements. The design of Resco systems are unique, they have fewer dirt traps, improved privacy and easier to clean.

#### Greenstar V3.1 - MAT-4

Improves interior air quality by reducing VOC and Formaldehyde emissions. (Greenguard gold certification).

#### Living Building Challenge

Resco's Antibac panels are free of the ingredients appearing in the Red List Summary of the Living Building Challenge (Supplier declaration).

#### NZBC CVM2/AS2-AS7

Resco's panels are suitable for application in rooms with intermittent use. We typically propose our systems in toilet and shower blocks. (BRANZ testing FH 5110 - Group 3 rating).

**RESOCO**  
Ablution Solutions

**RESOCO**  
**ANTIBAC PANEL**  
Lifetime Protection

# Series 5000 FH

Standard Full Height Cubicle Systems



## PRODUCT TECHNICAL STATEMENT

### Hardware information

#### OPTION 1: Sera Lock & Indicator Set Anti-Microbial (ANMB)

##### Material

- Diecast Zinc, Alloy ZP3
- Brass Hinge Shaft with Nylon Inserts
- ABS Snap on Covers

##### Finish

- High Gloss Antimicrobial Thermoset enamel Coated in grey.

##### Mounting

- Concealed Screw Fix.
- Surface Mounted.

##### Features

- 3x Fully Adjustable Spring Hinges to suit door. Can be set to Hold Open / Hold Closed.
- 1x Matching Doorstop/Coathook
- 1x Easy-Glide Slide Lock for restricted hand mobility, limb loss
- Raised directional arrows
- Deemed to satisfy Disability Standard AS1428.1
- Universal system provides design uniformity
- Resco Antimicrobial hardware reduces the levels of surface bacteria by up to 99.9%

#### OPTION 2: Sera Lock & Indicator Set Black

##### Material

- Diecast Zinc, Alloy ZP3.
- Brass Hinge Shaft with Nylon Inserts.
- ABS Snap on Covers.

##### Finish

- Black Coated.

##### Mounting

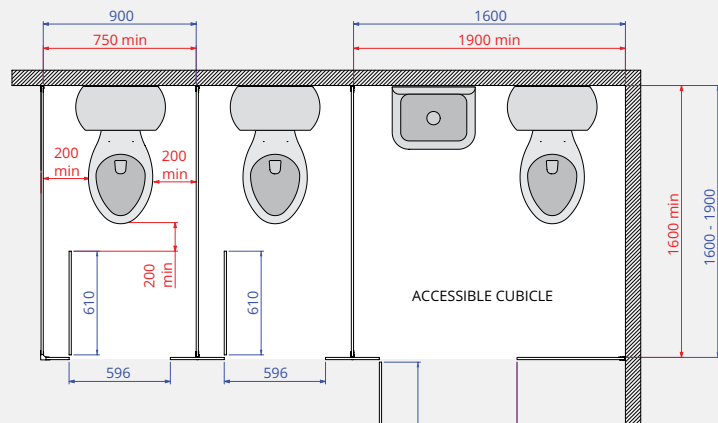
- Concealed Screw Fix.
- Surface Mounted.

##### Features

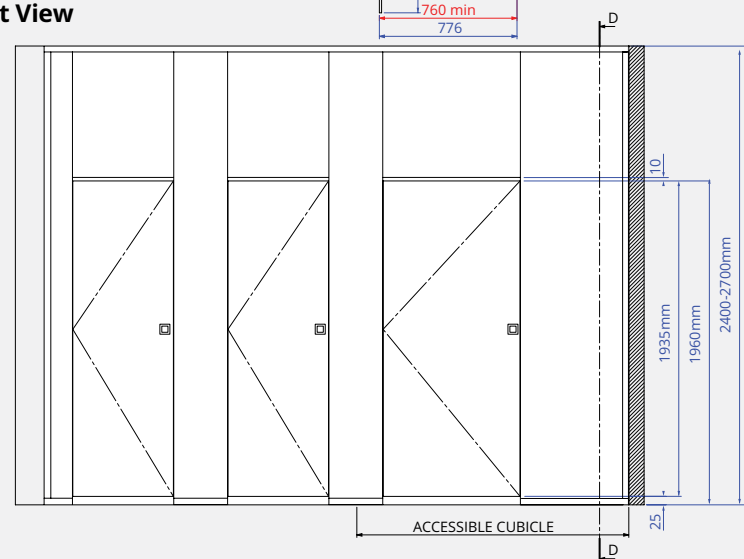
- 3x Fully Adjustable Spring Hinges to suit door. Can be set to Hold Open / Hold Closed.
- 1x Matching Doorstop/Coathook
- 1x Easy-Glide Slide Lock for restricted hand mobility, limb loss
- Raised directional arrows
- Deemed to satisfy Disability Standard AS1428.1
- Universal system provides design uniformity
- Resco Antimicrobial hardware reduces the levels of surface bacteria by up to 99.9%

Drawings show a left return, other configurations are available.  
For CAD drawings go to: [www.resco.co.nz/series-5000-fh](http://www.resco.co.nz/series-5000-fh)

#### Plan View



#### Front View



KEY ■ NZBC G1/AS1 min Req. ■ Resco Standard All measurements are in millimetres

### Dimension details

As cubicles are custom made to your measurements, depths and widths can be varied to suit, while complying with the NZ building code.

The Series 5000-FH standard dimensions are:

- Height 2400mm with 0 -160mm floor clearance.
- Depth 1600mm-1900mm (1900mm for accessible).
- Standard cubicles are recommended in an open-in door option.
- Standard cubicle doors are 610mm (opening is 585mm).
- Accessible cubicle doors are 810mm (opening is 785mm).
- Sliding doors are also available.

### Warranty information

Our standard warranties are:

- 10 years Compact Laminate panel integrity.
- 2 years on hardware.
- 2 years on workmanship.

# RESCO

*Ablution Solutions*

For further information contact Customer Services on 0800 800 950 or [www.resco.co.nz](http://www.resco.co.nz).