

Washroom - Order Form

Commercial accessories and hardware

RESCO

Ablution Solutions



Resco Ltd.
12 Kahu Crescent, Te Rapa
Hamilton 3200, New Zealand

Freephone: **0800 800 950**

Phone: 07 850 1025

Fax: 07 850 1026

Email: service@resco.co.nz

Website: www.resco.co.nz

Instructions:

Fill out your Contact and Project details, relevant product colours and the quantities of products you require. Then save the pdf file with your business name and email to service@resco.co.nz

Notes:

1. Prices Excl GST ex Hamilton Warehouse.
2. Products and Prices may change without prior notice.
3. Packaging and freight will be charged on all deliveries.
4. Returned goods will incur a 15% restocking fee (must be in a resalable condition).

Company Name: _____

Contact Person: _____

Contact Phone: _____

Contact Email: _____

Project Name: _____

Order Number: _____

Supply Date: _____

Delivery Address: _____

BABY CHANGE STATIONS

Horizontal Baby Change Station

PRODUCT CODE ML-8100H



SPECIFICATION SHEET

For more information and to view this products PDF Specification Sheet please click below.

Unit Cost	Quantity
\$830.87	

Recessed Horizontal Baby Change Station

PRODUCT CODE ML-8200REC



SPECIFICATION SHEET

For more information and to view this products PDF Specification Sheet please click below.

Unit Cost	Quantity
\$2121.63	

Surface Mounted Horizontal Baby Change Station

PRODUCT CODE ML-8200SM



SPECIFICATION SHEET

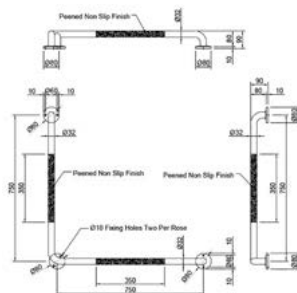
For more information and to view this products PDF Specification Sheet please click below.

Unit Cost	Quantity
\$2289.02	

GRAB RAILS

90° Peened Grab Rail

PRODUCT CODE SMR750P



SPECIFICATION SHEET

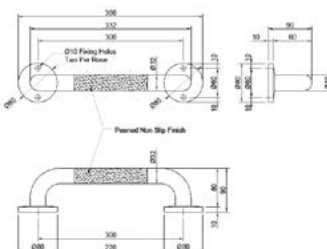
For more information and to view this products PDF Specification Sheet please click below.

Unit Cost	Quantity
-----------	----------

\$202.39	
----------	--

Straight Peened Grab Rail - 300mm C to C

PRODUCT CODE SMR327P



SPECIFICATION SHEET

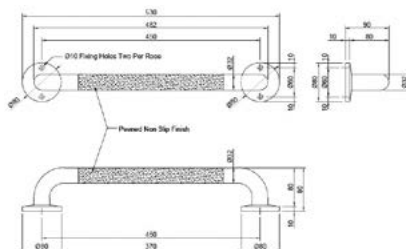
For more information and to view this products PDF Specification Sheet please click below.

Unit Cost	Quantity
-----------	----------

\$70.54	
---------	--

Straight Peened Grab Rail - 450mm C to C

PRODUCT CODE SMR330P



SPECIFICATION SHEET

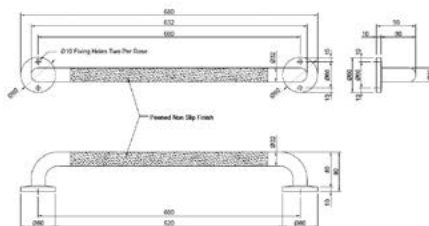
For more information and to view this products PDF Specification Sheet please click below.

Unit Cost	Quantity
-----------	----------

\$77.17	
---------	--

Straight Peened Grab Rail - 600mm C to C

PRODUCT CODE SMR331P



SPECIFICATION SHEET

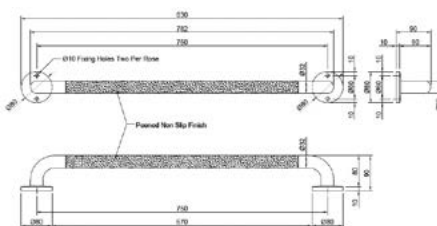
For more information and to view this products PDF Specification Sheet please click below.

Unit Cost	Quantity
-----------	----------

\$123.80	
----------	--

Straight Peened Grab Rail - 750mm C to C

PRODUCT CODE SMR332P



SPECIFICATION SHEET

For more information and to view this products PDF Specification Sheet please click below.

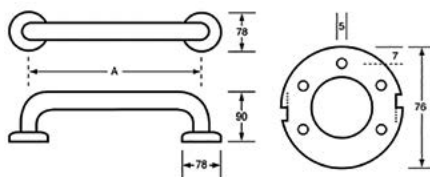
Unit Cost	Quantity
-----------	----------

\$133.48	
----------	--

GRAB RAILS

AntiMicrobial Straight Grab Rails - 300mm C to C

PRODUCT CODE ANMB-ML327



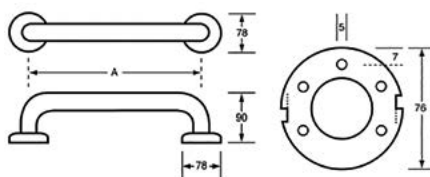
SPECIFICATION SHEET

For more information and to view this products PDF Specification Sheet please click below.

Unit Cost	Quantity
\$82.17	

AntiMicrobial Straight Grab Rails - 450mm C to C

PRODUCT CODE ANMB-ML330



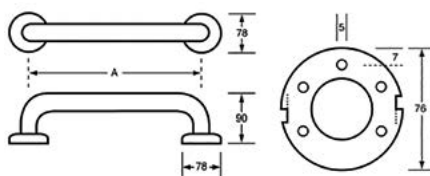
SPECIFICATION SHEET

For more information and to view this products PDF Specification Sheet please click below.

Unit Cost	Quantity
\$144.24	

AntiMicrobial Straight Grab Rails - 600mm C to C

PRODUCT CODE ANMB-ML331



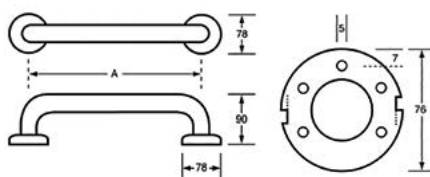
SPECIFICATION SHEET

For more information and to view this products PDF Specification Sheet please click below.

Unit Cost	Quantity
\$157.93	

AntiMicrobial Straight Grab Rails - 750mm C to C

PRODUCT CODE ANMB-ML332



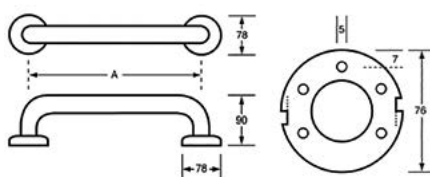
SPECIFICATION SHEET

For more information and to view this products PDF Specification Sheet please click below.

Unit Cost	Quantity
\$174.46	

AntiMicrobial Straight Grab Rails - 900mm C to C

PRODUCT CODE ANMB-ML333



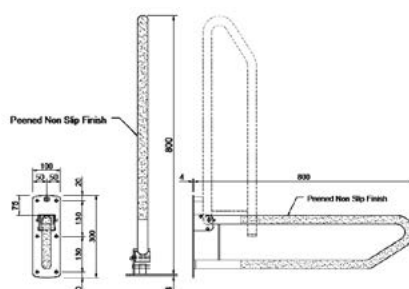
SPECIFICATION SHEET

For more information and to view this products PDF Specification Sheet please click below.

Unit Cost	Quantity
\$179.24	

GRAB RAILS

Drop Down Peened Grab Rail

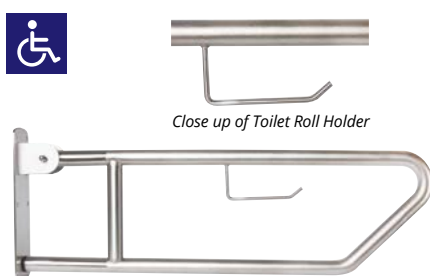
PRODUCT CODE SMR55P

SPECIFICATION SHEET

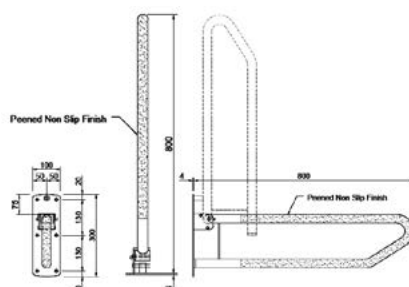
For more information and to view this products PDF Specification Sheet please click below.

Unit Cost	Quantity
\$356.09	

Drop Down Peened Grab Rail - with Toilet Roll Holder

PRODUCT CODE SMR55P-TPH

Close up of Toilet Roll Holder

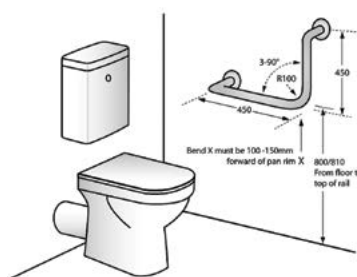


SPECIFICATION SHEET

For more information and to view this products PDF Specification Sheet please click below.

Unit Cost	Quantity
\$366.30	

AntiMicrobial 90° Ambulant Grab Rail

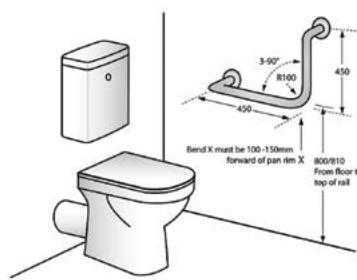
PRODUCT CODE ANMB-MLR112

SPECIFICATION SHEET

For more information and to view this products PDF Specification Sheet please click below.

Unit Cost	Quantity
\$175.87	

Designer 90° Ambulant Grab Rail

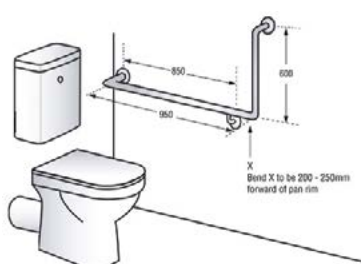
PRODUCT CODE DESIGNER-MLR112

SPECIFICATION SHEET

For more information and to view this products PDF Specification Sheet please click below.

Unit Cost	Quantity
\$173.37	

AntiMicrobial 90° Flush Mount Side Wall Grab Rail - Left

PRODUCT CODE ANMB-MLR103-X

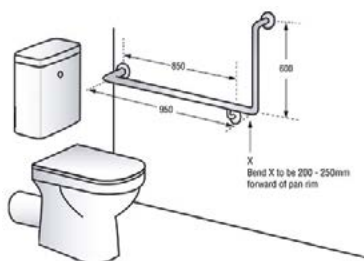
SPECIFICATION SHEET

For more information and to view this products PDF Specification Sheet please click below.

Unit Cost	Quantity
\$221.09	

GRAB RAILS

AntiMicrobial 90° Flush Mount Side Wall Grab Rail - Right PRODUCT CODE ANMB-MLR104X



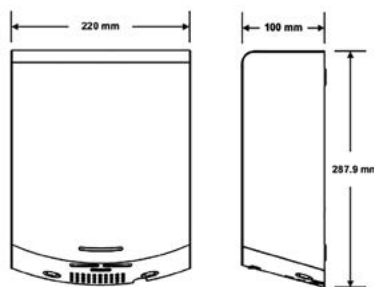
SPECIFICATION SHEET

For more information and to view this products PDF Specification Sheet please click below.

Unit Cost	Quantity
\$221.09	

HAND DRYERS

Eclipse Auto Operation Hand Dryer - Stainless Steel PRODUCT CODE ML-ECLIPSE05-SS

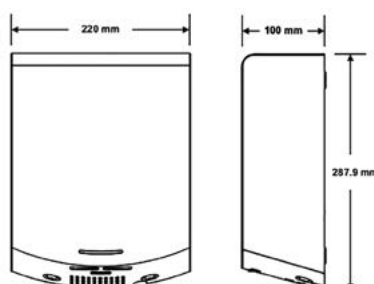


SPECIFICATION SHEET

For more information and to view this products PDF Specification Sheet please click below.

Unit Cost	Quantity
\$866.85	

Eclipse Auto Operation Hand Dryer - Designer Black PRODUCT CODE ML-ECLIPSE-DESIGNER

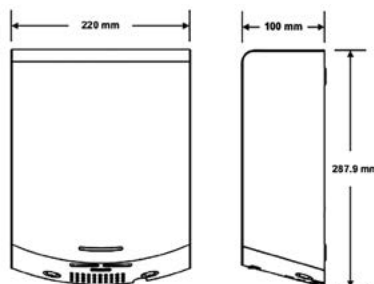


SPECIFICATION SHEET

For more information and to view this products PDF Specification Sheet please click below.

Unit Cost	Quantity
\$866.85	

Eclipse Auto Operation Hand Dryer - White PRODUCT CODE ML-ECLIPSE01-WH



SPECIFICATION SHEET

For more information and to view this products PDF Specification Sheet please click below.

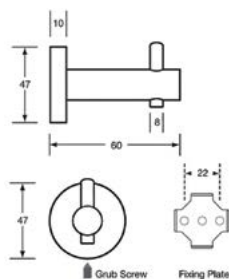
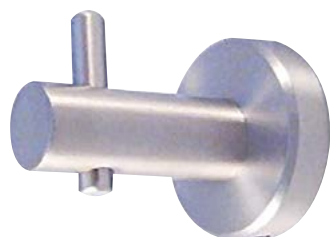
Unit Cost	Quantity
\$866.85	

HAND DRYERS

Slimline Auto Hand Dryer			PRODUCT CODE ML-100N-SS				
			<div>SPECIFICATION SHEET For more information and to view this products PDF Specification Sheet please click below.</div> <table><tr><th>Unit Cost</th><th>Quantity</th></tr><tr><td>\$985.98</td><td></td></tr></table>	Unit Cost	Quantity	\$985.98	
Unit Cost	Quantity						
\$985.98							
EcoMo Auto Operation High Speed Hand Dryer			PRODUCT CODE ML-ECOMOROUND-SIL				
			<div>SPECIFICATION SHEET For more information and to view this products PDF Specification Sheet please click below.</div> <table><tr><th>Unit Cost</th><th>Quantity</th></tr><tr><td>\$1,724.67</td><td></td></tr></table>	Unit Cost	Quantity	\$1,724.67	
Unit Cost	Quantity						
\$1,724.67							
EcoMo Auto Operation High Speed Hand Dryer			PRODUCT CODE ML-ECOMOROUND-BLK				
			<div>SPECIFICATION SHEET For more information and to view this products PDF Specification Sheet please click below.</div> <table><tr><th>Unit Cost</th><th>Quantity</th></tr><tr><td>\$1,724.67</td><td></td></tr></table>	Unit Cost	Quantity	\$1,724.67	
Unit Cost	Quantity						
\$1,724.67							
EcoMo Auto Operation High Speed Hand Dryer			PRODUCT CODE ML-ECOMOROUND-WHT				
			<div>SPECIFICATION SHEET For more information and to view this products PDF Specification Sheet please click below.</div> <table><tr><th>Unit Cost</th><th>Quantity</th></tr><tr><td>\$1,724.67</td><td></td></tr></table>	Unit Cost	Quantity	\$1,724.67	
Unit Cost	Quantity						
\$1,724.67							

HOOKS

AntiMicrobial Robe Hook

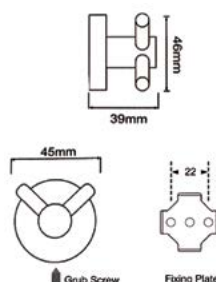
PRODUCT CODE ANMB-700-ROBEHOOK

SPECIFICATION SHEET

For more information and to view this products PDF Specification Sheet please click below.

Unit Cost	Quantity
\$131.52	

Double Coat Hook

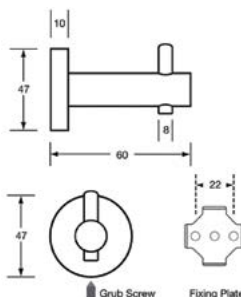
PRODUCT CODE ML2310-PSS

SPECIFICATION SHEET

For more information and to view this products PDF Specification Sheet please click below.

Unit Cost	Quantity
\$60.43	

Designer Hat & Coat Hook

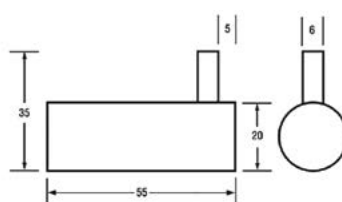
PRODUCT CODE ML2709-DESIGNER

SPECIFICATION SHEET

For more information and to view this products PDF Specification Sheet please click below.

Unit Cost	Quantity
\$70.98	

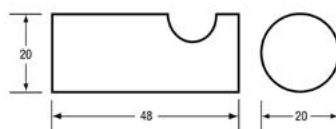
Coat Hook

PRODUCT CODE ML4161SS-HOOK

SPECIFICATION SHEET

For more information and to view this products PDF Specification Sheet please click below.

Unit Cost	Quantity
\$51.41	

Lawson Robe Hook**PRODUCT CODE** ML6036-PSS

SPECIFICATION SHEET

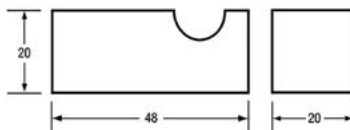
For more information and to view this products PDF Specification Sheet please click below.

Unit Cost	Quantity
\$53.48	

HOOKS

Paterson Robe Hook

PRODUCT CODE ML6086-PSS



SPECIFICATION SHEET

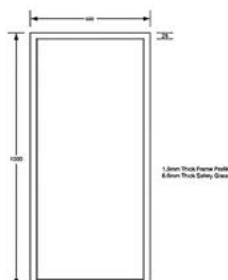
For more information and to view this products PDF Specification Sheet please click below.

Unit Cost	Quantity
\$55.22	

MIRRORS

Stainless Steel Framed Mirror

PRODUCT CODE ML771-6



SPECIFICATION SHEET

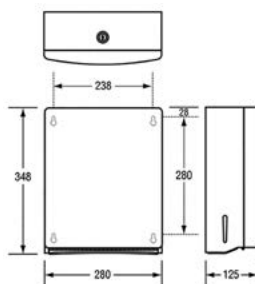
For more information and to view this products PDF Specification Sheet please click below.

Unit Cost	Quantity
\$566.74	

PAPER TOWEL / COMBINATION UNITS

AntiMicrobial Ellipse Paper Towel Dispenser

PRODUCT CODE ANMB-725AR



SPECIFICATION SHEET

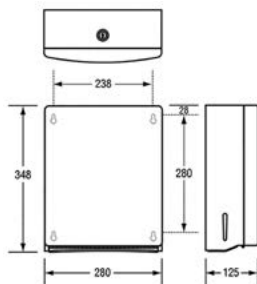
For more information and to view this products PDF Specification Sheet please click below.

Unit Cost	Quantity
\$334.13	

PAPER TOWEL / COMBINATION UNITS

Ellipse Paper Towel Dispenser - Stainless Steel

PRODUCT CODE ML725-AR



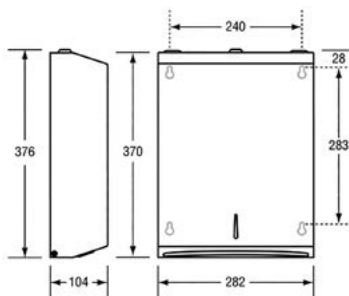
SPECIFICATION SHEET

For more information and to view this products PDF Specification Sheet please click below.

Unit Cost	Quantity
\$334.13	

Paper Towel Dispenser - Designer Black

PRODUCT CODE DESIGNER-ML725



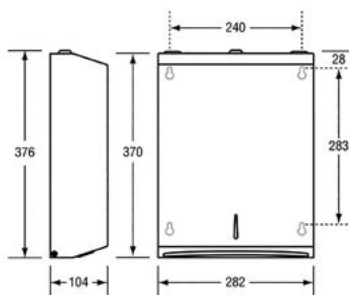
SPECIFICATION SHEET

For more information and to view this products PDF Specification Sheet please click below.

Unit Cost	Quantity
\$334.13	

Paper Towel Dispenser - Satin Stainless Steel

PRODUCT CODE ML725SS-MK2



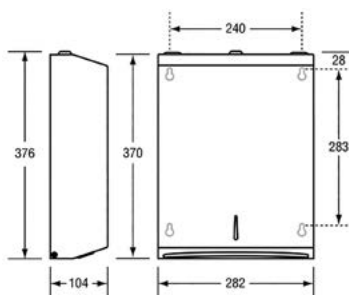
SPECIFICATION SHEET

For more information and to view this products PDF Specification Sheet please click below.

Unit Cost	Quantity
\$334.13	

Paper Towel Dispenser - White

PRODUCT CODE ML725W-MK2



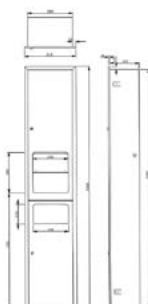
SPECIFICATION SHEET

For more information and to view this products PDF Specification Sheet please click below.

Unit Cost	Quantity
\$334.13	

Paper Towel Dispenser, Hand Dryer & Waste Unit

PRODUCT CODE ML-ECLIPSE-3N1REC-D



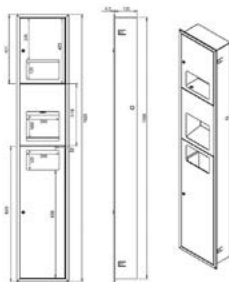
SPECIFICATION SHEET

For more information and to view this products PDF Specification Sheet please click below.

Unit Cost	Quantity
\$2,378.70	

PAPER TOWEL / COMBINATION UNITS

Recessed Paper Towel Dispenser, Eco Hand Dryer & Waste Unit **PRODUCT CODE ML-ECO-73N1REC**

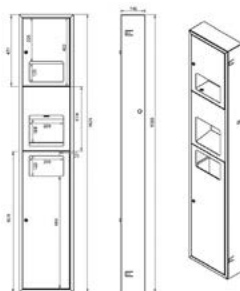


SPECIFICATION SHEET

For more information and to view this products PDF Specification Sheet please click below.

Unit Cost	Quantity
\$2,375.11	

Surface Mount Paper Towel Dispenser, Eco Hand Dryer & Waste Unit **CODE ML-ECO-73N1SM**



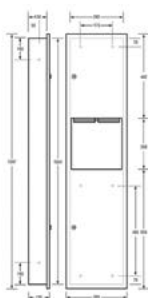
SPECIFICATION SHEET

For more information and to view this products PDF Specification Sheet please click below.

Unit Cost	Quantity
\$2,621.30	

Recessed Paper Towel Dispenser & Waste Receptacle

PRODUCT CODE ML706REC-MK2



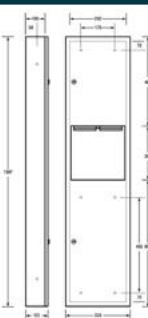
SPECIFICATION SHEET

For more information and to view this products PDF Specification Sheet please click below.

Unit Cost	Quantity
\$1,063.04	

Surface Mount Paper Towel Dispenser & Waste Receptacle

CODE ML706SM-MK2



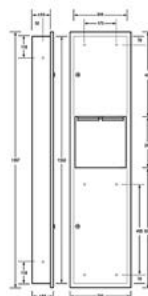
SPECIFICATION SHEET

For more information and to view this products PDF Specification Sheet please click below.

Unit Cost	Quantity
\$1,302.50	

Recessed Paper Towel Dispenser & Waste Receptacle

PRODUCT CODE ML707REC-MK2



SPECIFICATION SHEET

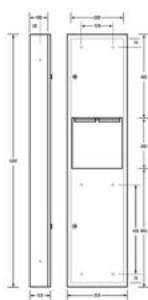
For more information and to view this products PDF Specification Sheet please click below.

Unit Cost	Quantity
\$1,431.96	

PAPER TOWEL / COMBINATION UNITS

Surface Mount Paper Towel Dispenser & Waste Receptacle

PRODUCT CODE ML707SM-MK2



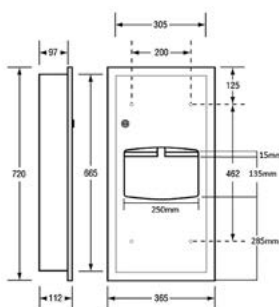
SPECIFICATION SHEET

For more information and to view this products PDF Specification Sheet please click below.

Unit Cost	Quantity
\$1,690.00	

Recessed Paper Towel Dispenser & Waste Receptacle

PRODUCT CODE ML710REC-MK2



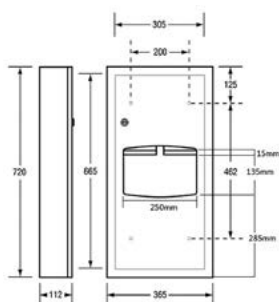
SPECIFICATION SHEET

For more information and to view this products PDF Specification Sheet please click below.

Unit Cost	Quantity
\$621.85	

Surface Mount Paper Towel Dispenser & Waste Receptacle

PRODUCT CODE ML710SM-MK2



SPECIFICATION SHEET

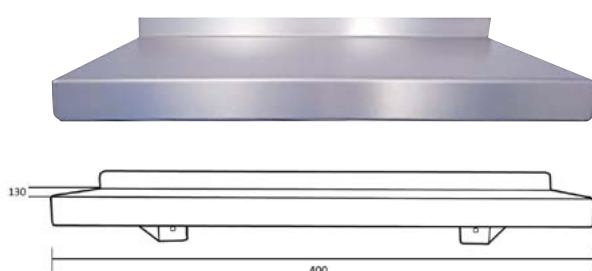
For more information and to view this products PDF Specification Sheet please click below.

Unit Cost	Quantity
\$790.54	

SHELVES

AntiMicrobial Stainless Steel Utility Shelf

PRODUCT CODE ANMB-ML951-400SHELF



SPECIFICATION SHEET

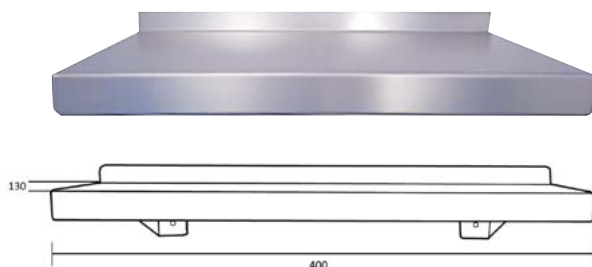
For more information and to view this products PDF Specification Sheet please click below.

Unit Cost	Quantity
\$187.83	

SHELVES

Stainless Steel Utility Shelf

PRODUCT CODE ML951-400SHELF-SS



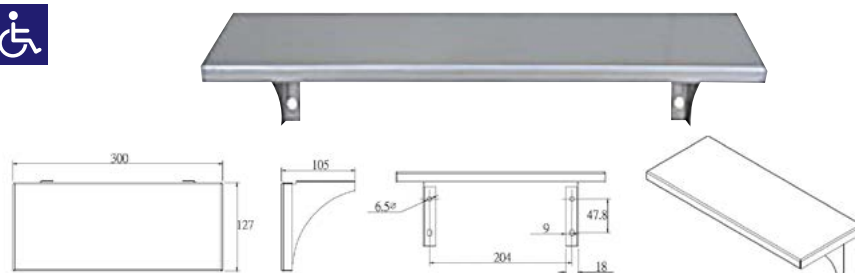
SPECIFICATION SHEET

For more information and to view this products PDF Specification Sheet please click below.

Unit Cost	Quantity
\$157.17	

Utility Shelf

PRODUCT CODE ML950-12



SPECIFICATION SHEET

For more information and to view this products PDF Specification Sheet please click below.

Unit Cost	Quantity
\$137.17	

SHOWER SEATS AND SHOWER RELATED

Shower Curtain

PRODUCT CODE ML-SC-SERIES

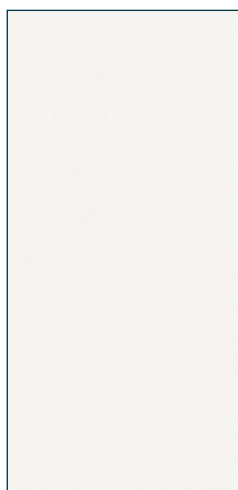


SPECIFICATION SHEET

For more information and to view this products PDF Specification Sheet please click below.



White Box Stripe Polyester



White Polyester Taffeta

White Box Stripe Polyester

1800mm Drop	Product Code	Cost	Quantity
1500 x 1800mm	ML-SC-WBS-1518	\$147.83	
2600 x 1800mm	ML-SC-WBS-2618	\$203.80	
3000 x 1800mm	ML-SC-WBS-3018	\$221.96	
2000mm Drop	Product Code	Cost	Quantity
1500 x 2000mm	ML-SC-WBS-1520	\$176.20	
2600 x 2000mm	ML-SC-WBS-2620	\$248.04	
3000 x 2000mm	ML-SC-WBS-3020	\$266.20	

White Polyester Taffeta

1800mm Drop	Product Code	Cost	Quantity
1500 x 1800mm	ML-SC-WNT-1518	\$135.33	
2600 x 1800mm	ML-SC-WNT-2618	\$160.98	
3000 x 1800mm	ML-SC-WNT-3018	\$168.70	
2000mm Drop	Product Code	Cost	Quantity
1500 x 2000mm	ML-SC-WNT-1520	\$147.83	
2600 x 2000mm	ML-SC-WNT-2620	\$205.22	
3000 x 2000mm	ML-SC-WNT-3020	\$217.83	

SHOWER SEATS AND SHOWER RELATED

L Bend Shower Curtain Track System

PRODUCT CODE ML-SCT-SERIES



* NZS 4121:2001
COMPLIANT

SPECIFICATION SHEET

For more information and to view this products
PDF Specification Sheet please click below.

Size	Unit Cost	Quantity
1200 x 1200mm*	\$189.89	
1600 x 1600mm	\$313.15	

32mm Grab Rail Shower Kit

PRODUCT CODE ML22-6566MK2



Pictured with
MLR1078
Universal Sliding
Shower Rail.



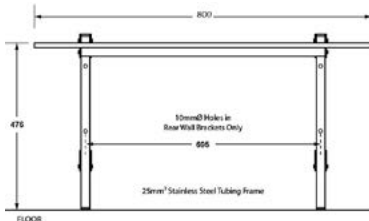
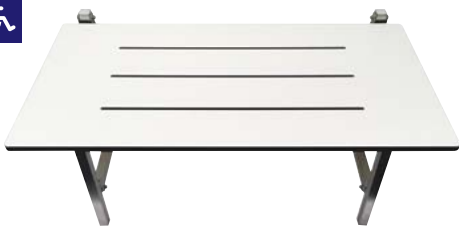
SPECIFICATION SHEET

For more information and to view
this products PDF Specification
Sheet please click below.

Unit Cost	Quantity
\$278.59	

800mm Compact Laminate Folding Shower Seat

PRODUCT CODE ML997-CL



SPECIFICATION SHEET

For more information and to view
this products PDF Specification
Sheet please click below.

Unit Cost	Quantity
\$594.11	

SIGNAGE

General

SPECIFICATION SHEET

For more information and to view these products PDF Specification Sheet please click [here](#).



Shown: Blue & White

First Aid

Dimensions	150mmW x 150mmH		
Code	Material	Cost	Quantity
ML16095-SS	Stainless Steel	\$143.26	
ML16095-BLU	Vinyl - Blue & White	\$132.61	
ML16095-SIL	Vinyl - Silver & Black	\$137.39	



Shown: Stainless Steel

Baby Change

Dimensions	150mmW x 150mmH		
Code	Material	Cost	Quantity
ML16280-SS	Stainless Steel	\$149.02	
ML16280-BLU	Vinyl - Blue & White	\$135.43	
ML16280-SIL	Vinyl - Silver & Black	\$142.83	



Shown: Stainless Steel

Cleaner

Dimensions	150mmW x 150mmH		
Code	Material	Cost	Quantity
ML16092-SS	Stainless Steel	\$138.80	
ML16092-BLU	Vinyl - Blue & White	\$130.33	
ML16092-SIL	Vinyl - Silver & Black	\$132.61	



Shown: Stainless Steel

Cleaner

Dimensions	230mmW x 57mmH		
Code	Material	Cost	Quantity
ML16091-SS	Stainless Steel	\$135.11	
ML16091-BLU	White on Blue Vinyl	\$63.37	
ML16091-SIL	Black on Silver Vinyl	\$119.13	



Shown: Stainless Steel

Toilets

Dimensions	230mmW x 57mmH		
Code	Material	Cost	Quantity
ML16051-SS	Stainless Steel	\$130.33	
ML16051-SIL	Black on Silver Vinyl	\$115.65	



Shown: Stainless Steel

Staff Only

Dimensions	300mmW x 57mmH		
Code	Material	Cost	Quantity
ML16061-SS	Stainless Steel	\$147.61	
ML16061-BLU	Vinyl - Blue & White	\$126.74	
ML16061-SIL	Black on Silver Vinyl	\$127.39	



Shown: Stainless Steel

Fire Hose Reel

Dimensions	365mmW x 75mmH		
Code	Material	Cost	Quantity
ML16212-SS	Stainless Steel	\$203.91	
ML16212-SIL	Black on Silver Vinyl	\$165.22	



Shown: Stainless Steel

Switchboard

Dimensions	300mmW x 75mmH		
Code	Material	Cost	Quantity
ML16423-SS	Stainless Steel	\$151.96	
ML16423-BLU	White on Blue Vinyl	\$74.67	
ML16423-SIL	Black on Silver Vinyl	\$72.07	

SIGNAGE

Male, Female & Unisex

SPECIFICATION SHEET

For more information and to view these products PDF Specification Sheet please click [here](#).



Shown: Vinyl - Blue & White

Male Toilet			
Dimensions	180mmW x 180mmH		
Code	Material	Cost	Quantity
ML96242-BLU	ABS - Blue & White	\$83.91	
ML96242-SIL	ABS - Silver & Black	\$83.91	



Shown: Vinyl - Blue & White

Female Toilet			
Dimensions	180mmW x 180mmH		
Code	Material	Cost	Quantity
ML96262-BLU	ABS - Blue & White	\$83.91	
ML96262-SIL	ABS - Silver & Black	\$83.91	



Shown: Stainless Steel

Male Toilet			
Dimensions	150mmW x 150mmH x 1.6mm thick		
Code	Material	Cost	Quantity
ML16242-SS	#304 Stainless Steel	\$150.11	
ML16242-BLU	Vinyl - Blue & White	\$135.76	
ML16242-SIL	Vinyl - Silver & Black	\$143.91	



Shown: Stainless Steel

Female Toilet			
Dimensions	150mmW x 150mmH x 1.6mm thick		
Code	Material	Cost	Quantity
ML16262-SS	#304 Stainless Steel	\$156.74	
ML16262-BLU	Vinyl - Blue & White	\$139.13	
ML16262-SIL	Vinyl - Silver & Black	\$150.33	



Shown: Vinyl - Blue & White

Unisex Toilet			
Dimensions	210mmW x 180mmH		
Code	Material	Cost	Quantity
ML96211-BLU	ABS - Blue & White	\$83.91	
ML96211-SIL	ABS - Silver & Black	\$83.91	



Shown: Vinyl - Blue & White

Unisex Toilet			
Dimensions	150mmW x 150mmH		
Code	Material	Cost	Quantity
ML16211-SS	Stainless Steel	\$167.83	
ML16211-BLU	Vinyl - Blue & White	\$147.39	
ML16211-SIL	Vinyl - Silver & Black	\$160.98	



Shown: Vinyl - Blue & White

Entrance			
Dimensions	200mmW x 150mmH		
Code	Material	Cost	Quantity
ML16234-SS	Stainless Steel	\$172.28	
ML16234-BLU	Vinyl - Blue & White	\$146.63	
ML16234-SIL	Vinyl - Silver & Black	\$164.35	

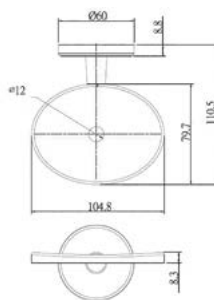


Shown: Vinyl - Blue & White

Exit			
Dimensions	200mmW x 150mmH		
Code	Material	Cost	Quantity
ML16236-SS	Stainless Steel	\$157.72	
ML16236-BLU	Vinyl - Blue & White	\$139.78	
ML16236-SIL	Vinyl - Silver & Black	\$150.43	

SOAP DISH & SHAMPOO HOLDERS

Soap Dish with Drain Hole

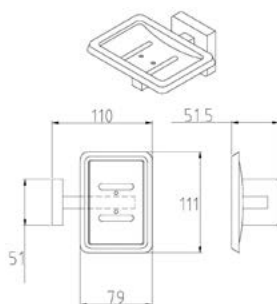
**PRODUCT CODE ML3359B-XH**

SPECIFICATION SHEET

For more information and to view this products PDF Specification Sheet please click below.

Unit Cost	Quantity
\$59.78	

Soap Dish with Drain Hole

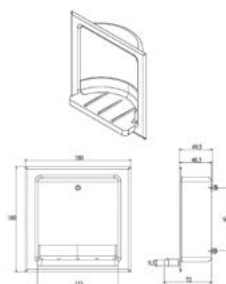
**PRODUCT CODE ML230S**

SPECIFICATION SHEET

For more information and to view this products PDF Specification Sheet please click below.

Unit Cost	Quantity
\$64.46	

Recessed Soap Dish

**PRODUCT CODE ML232S**

SPECIFICATION SHEET

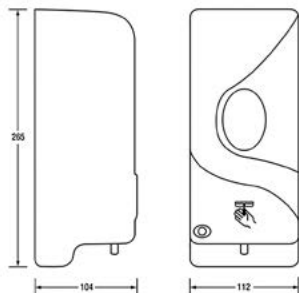
For more information and to view this products PDF Specification Sheet please click below.

Unit Cost	Quantity
\$61.20	

SOAP DISPENSERS

Auto Soap Dispenser

PRODUCT CODE ML-950DA-WHT



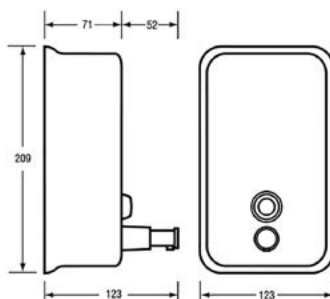
SPECIFICATION SHEET

For more information and to view this products PDF Specification Sheet please click below.

Unit Cost	Quantity
\$282.72	

Vertical Soap Dispenser - Stainless Steel

PRODUCT CODE ML605AS-N



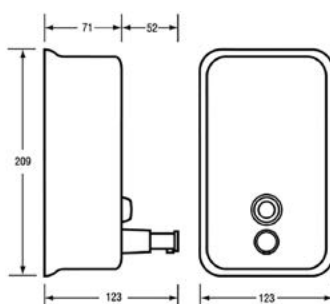
SPECIFICATION SHEET

For more information and to view this products PDF Specification Sheet please click below.

Unit Cost	Quantity
\$177.07	

Vertical Soap Dispenser - Designer Black

PRODUCT CODE ML605BAS-DESIGNER



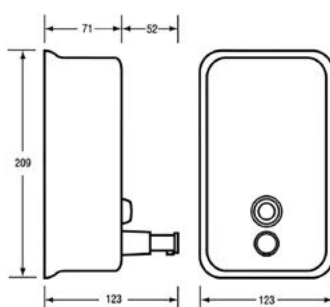
SPECIFICATION SHEET

For more information and to view this products PDF Specification Sheet please click below.

Unit Cost	Quantity
\$177.07	

Vertical Soap Dispenser - White

PRODUCT CODE ML605AS-N



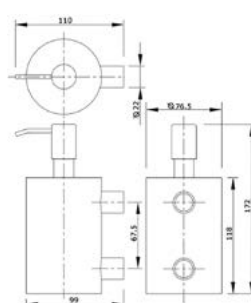
SPECIFICATION SHEET

For more information and to view this products PDF Specification Sheet please click below.

Unit Cost	Quantity
\$177.07	

Wall Mounted Soap Dispenser

PRODUCT CODE ML615-B



SPECIFICATION SHEET

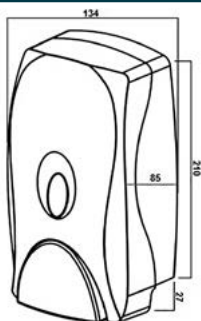
For more information and to view this products PDF Specification Sheet please click below.

Unit Cost	Quantity
\$235.33	

SOAP DISPENSERS

Foam Soap Dispenser

PRODUCT CODE ML-681-F



SPECIFICATION SHEET

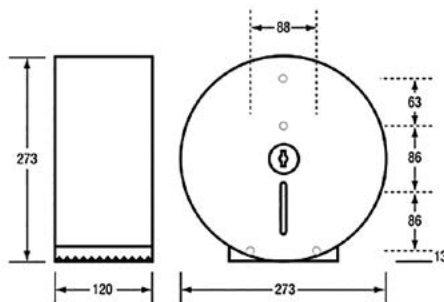
For more information and to view this products PDF Specification Sheet please click below.

Unit Cost	Quantity
\$80.65	

TOILET ROLL DISPENSERS

Jumbo Toilet Roll Dispenser - Stainless Steel

PRODUCT CODE ML841



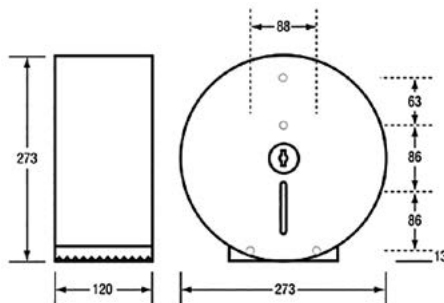
SPECIFICATION SHEET

For more information and to view this products PDF Specification Sheet please click below.

Unit Cost	Quantity
\$186.41	

Jumbo Toilet Roll Dispenser - Designer Black

PRODUCT CODE ML841-DESIGNER



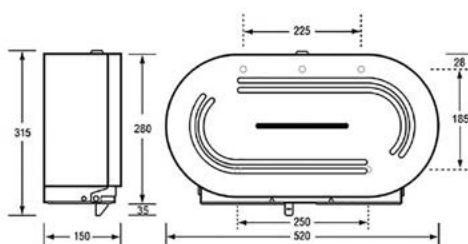
SPECIFICATION SHEET

For more information and to view this products PDF Specification Sheet please click below.

Unit Cost	Quantity
\$186.41	

Double Jumbo Toilet Roll Dispenser

PRODUCT CODE ML841-DBL



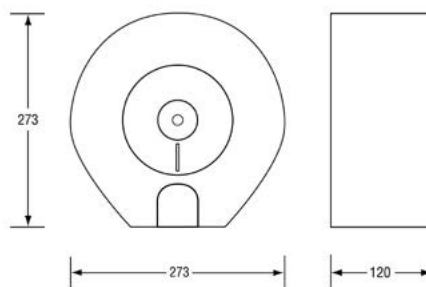
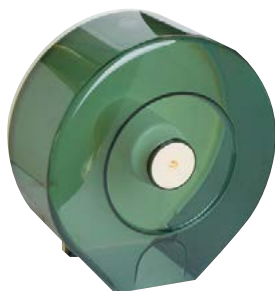
SPECIFICATION SHEET

For more information and to view this products PDF Specification Sheet please click below.

Unit Cost	Quantity
\$370.76	

TOILET ROLL DISPENSERS

Jumbo Toilet Roll Dispenser

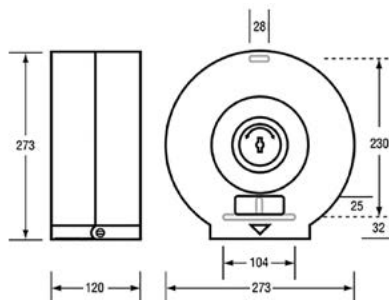
PRODUCT CODE ML840

SPECIFICATION SHEET

For more information and to view this products PDF Specification Sheet please click below.

Unit Cost	Quantity
\$71.30	

Jumbo Toilet Roll Dispenser

PRODUCT CODE ML862

SPECIFICATION SHEET

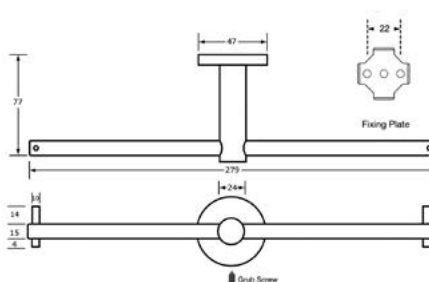
For more information and to view this products PDF Specification Sheet please click below.

Unit Cost	Quantity
\$74.13	

TOILET ROLL HOLDERS

Double Toilet Roll Holder

PRODUCT CODE ANMB-700-2TRH

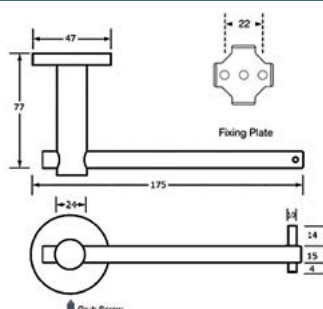


SPECIFICATION SHEET

For more information and to view this products PDF Specification Sheet please click below.

Unit Cost	Quantity
\$192.72	

Single Toilet Roll Holder

PRODUCT CODE ANMB-700-TRH

SPECIFICATION SHEET

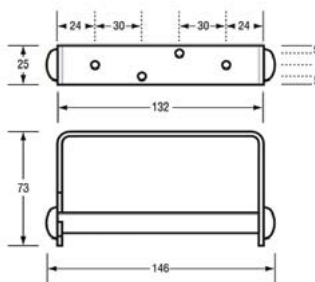
For more information and to view this products PDF Specification Sheet please click below.

Unit Cost	Quantity
\$162.83	

TOILET ROLL HOLDERS

Single Toilet Roll Holder

PRODUCT CODE ML-113



SPECIFICATION SHEET

For more information and to view this products PDF Specification Sheet please click below.

Unit Cost	Quantity
\$49.78	

Recessed Single Toilet Roll Holder

PRODUCT CODE ML-260-S & ML-260-B



SPECIFICATION SHEET

For more information and to view this products PDF Specification Sheet please click below.

Code	Material	Cost	Quantity
ML-260-S	Stainless Steel	\$72.50	
ML-260V-B	Polished Stainless Steel	\$72.50	

Surface Mount Single Toilet Roll Holder

PRODUCT CODE ML-260SM-S & ML-260SM-B



SPECIFICATION SHEET

For more information and to view this products PDF Specification Sheet please click below.

Code	Material	Cost	Quantity
ML-260SM-S	Stainless Steel	\$125.76	
ML-260SM-B	Polished Stainless Steel	\$125.76	

Surface Mount Double Toilet Roll Holder

PRODUCT CODE ML-262SM-S



SPECIFICATION SHEET

For more information and to view this products PDF Specification Sheet please click below.

Code	Material	Cost	Quantity
ML-262SM-S	Stainless Steel	\$182.17	

Resco Ltd.
12 Kahu Crescent, Te Rapa
Hamilton 3200, New Zealand
Freephone: **0800 800 950**
Phone: 07 850 1025
Fax: 07 850 1026
Email: service@resco.co.nz
Website: www.resco.co.nz

Fill out your Contact and Project details,
then the quantities of products you require,
save the pdf file with your business name
and email to service@resco.co.nz

Notes:

1. Prices Excl GST ex Hamilton Warehouse.
2. Products and Prices may change without prior notice.
3. Packaging and freight will be charged on all deliveries.
4. Returned goods will incur a 15% restocking fee (must be in a resalable condition).