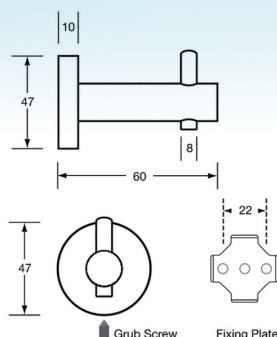
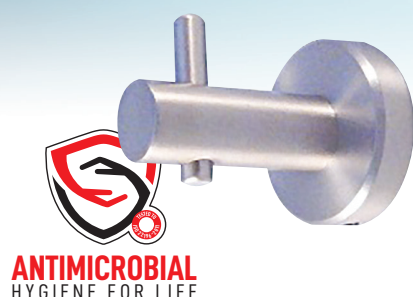


We have a hook to suit your every need. Our large selection of hooks are available in Antimicrobial, satin and polished stainless steel, satin or bright chrome plated brass or diecast zinc alloy.

Robe Hook *ANMB-700-ROBEHOOK*



SPECIFICATIONS

Material	#304 Stainless Steel
Finish	Antimicrobial Coated
Mounting	Concealed Screw Fix via Fixing Plate, Allen Key Supplied

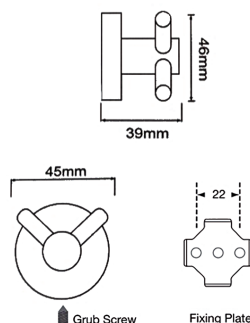
Dimensions 47x47x60mm

*This unit is accessible compliant when installed in accordance with NZS 4121:2001-Section 10.

Also available in Satin Stainless Steel

Product Code 700-SS-ROBEHOOK

Double Coat Hook *ML2310-PSS*



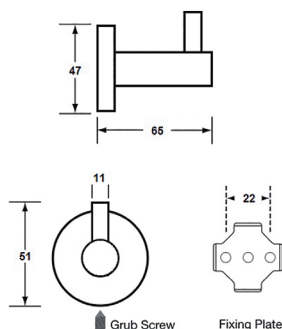
SPECIFICATIONS

Material	#304 Stainless Steel
Finish	Polished Stainless Steel
Mounting	Concealed Screw Fix via Fixing Plate, Allen Key Supplied

Dimensions 45mmW x 46mmH x 39mmD

*This unit is accessible compliant when installed in accordance with NZS 4121:2001-Section 10.

Designer Hat & Coat Hook *ML2709-DESIGNER*



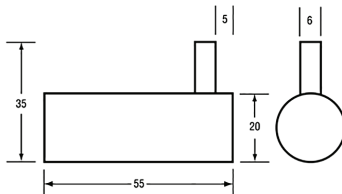
SPECIFICATIONS

Material	Stainless Steel
Finish	Satin Matte Black
Mounting	Concealed Screw Fix via Fixing Plate, Allen Key Supplied

Dimensions 47mmW x 51mmH x 65mmD

*This unit is accessible compliant when installed in accordance with NZS 4121:2001-Section 10.

Coat Hook *ML4161SS-HOOK*

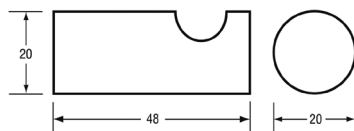
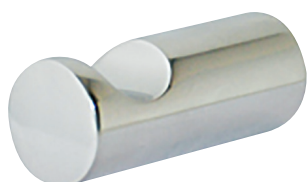


SPECIFICATIONS

Material	#304 Stainless Steel
Finish	Polished Stainless Steel
Mounting	Concealed Screw Fix via Ferrule
Dimensions	20mmW x 35mmH x 55mmD
Note	Use Dress Trim ML6044PSS for soft wall fixing

*This unit is accessible compliant when installed in accordance with NZS 4121:2001-Section 10.

Lawson Robe Hook *ML6036-PSS*

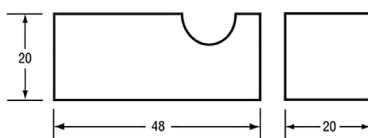


SPECIFICATIONS

Material	#304 Polished Stainless Steel
Finish	Polished Stainless Steel
Mounting	Surface Mount Concealed Fix
Dimensions	48mmD x 20mmØ
Note	Use Dress Trim ML6044PSS for soft wall fixing

*This unit is accessible compliant when installed in accordance with NZS 4121:2001-Section 10.

Paterson Robe Hook *ML6086-PSS*



SPECIFICATIONS

Material	#304 Stainless Steel
Finish	Polished Stainless Steel
Mounting	Surface Mount Concealed Fix
Overall Size	48mmD x 20mm²
Note	Use Dress Trim ML6094PSS for soft wall

*This unit is accessible compliant when installed in accordance with NZS 4121:2001-Section 10.