

# NEW RESCO ANTIBAC PANEL

*Fact Sheet*  
NOVEMBER 2014



## Background

Bacteria - Germs, Microbes, Microorganisms

### What are Bacteria?

Bacteria are organisms made up of just one cell. They are capable of multiplying by themselves, as they have the power to divide. Their shapes vary, and doctors use these characteristics to separate them into groups.

Bacteria exist everywhere, inside and on our bodies. Most of them are completely harmless and some of them are very useful.

But some Bacteria can cause diseases, either because they end up in the wrong place in the body or simply because they are 'designed' to invade us.

### How are infections with Bacteria spread?

The most common way in which Bacteria can be spread is through contact. Touching a Bacteria laden doorknob or surface, or touching or shaking hands with another person is a reliable way to spread Bacteria. A person with a cold can spread the infection by coughing and/or sneezing.

The best way to prevent the spread of Bacteria is through proper hygiene. This means washing your hands regularly, using antibacterial wipes where necessary, and keeping surfaces hygienic. Many diseases can be spread through touching surfaces contaminated with 'disease causing Bacteria' from other people.

**Antibac** - an exciting new Compact Laminate Panel from Resco. Made with cutting-edge anti-microbial technology that continuously destroys Bacteria, for the lifetime of the panel.

## KEY STATEMENTS

### Compact Laminate Panel

Resco Antibac Compact Laminate Panel, uses silver ion technology from Biocote to reduce the levels of bacteria.

Kills more than 99.99% of Bacteria.

Provides safe and long lasting protection.

### About Biocote Silver Ion Technology

- Silver ions are widely used as antibacterial agents in medical devices, such as implants and wound dressings, in water and air purification systems, and on hygienic surfaces such as food preparation and storage surfaces.
- BioCote antimicrobial protection reduces levels of Bacteria on surfaces by up to 99.99% and is effective against a wide range of microbes.
- The silver ions interrupt the replication ability of proteins within the Bacteria, making them inactive.
- BioCote protected products can reduce levels of product surface contamination.
- Levels of Bacteria are reduced by up to 99% in just 2 hours.
- BioCote antimicrobial additives provide continuous and durable surface protection, they do not wear off or wash away.
- BioCote antimicrobial additives will not leach from the surface of treated products which means the antimicrobial performance is retained for the lifetime of the product.
- The efficacy of BioCote technology has been proven in accelerated lifecycle tests by an independent laboratory.
- Whilst cleaning is effective and necessary, it is impossible to clean a surface every minute of every day. Unfortunately the minute cleaning stops, Bacteria can begin to grow, with some Bacteria having the ability to double in number every 20 minutes. As Bacteria begin to grow, so does the risk of cross-contamination, illness and infection.
- Disinfectants will instantly reduce levels of contamination but tend not to maintain their effect. In comparison, the recognised antimicrobial action of silver technology is constant. BioCote protection works long after the effect of disinfectants has stopped, to continuously decontaminate surfaces of Bacteria, making them cleaner and more hygienic.

**RESCO**  
**ANTIBAC PANEL**  
*Lifetime Protection*

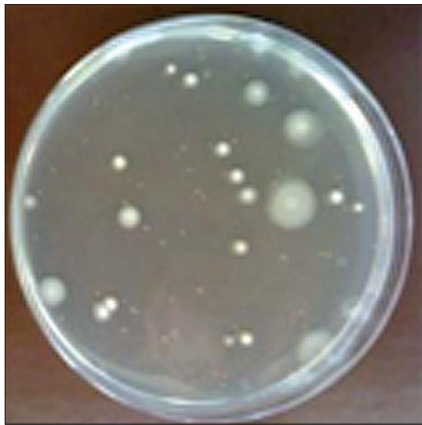
## How does Resco Antibac Panel work?

During Manufacture of Compact Laminate the biocote active agent is dissolved in the melamine resin. Once the panel is made this agent will release its effectiveness in the event of a direct contact with the surface.

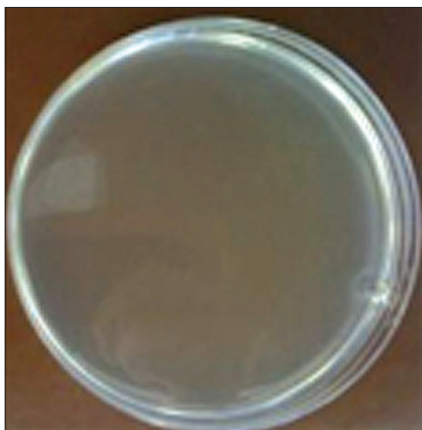
### How silver works

Silver particles have long been recognised as being toxic to bacteria but completely safe to humans. They inactivate key bacterial enzymes, which results in the death of the bacterial cell. So when bacteria come into contact with the surface, the additive will damage their cells in a number of ways, preventing further growth of the bacteria and the bacteria will die out.

The active ingredient on the surface of a material treated with BioCote additives bind with microbes that come into contact with the surface and irreparably damage them, disrupting their normal cell function which stops them from reproducing and finally results in the death of the cell.



Control Sample

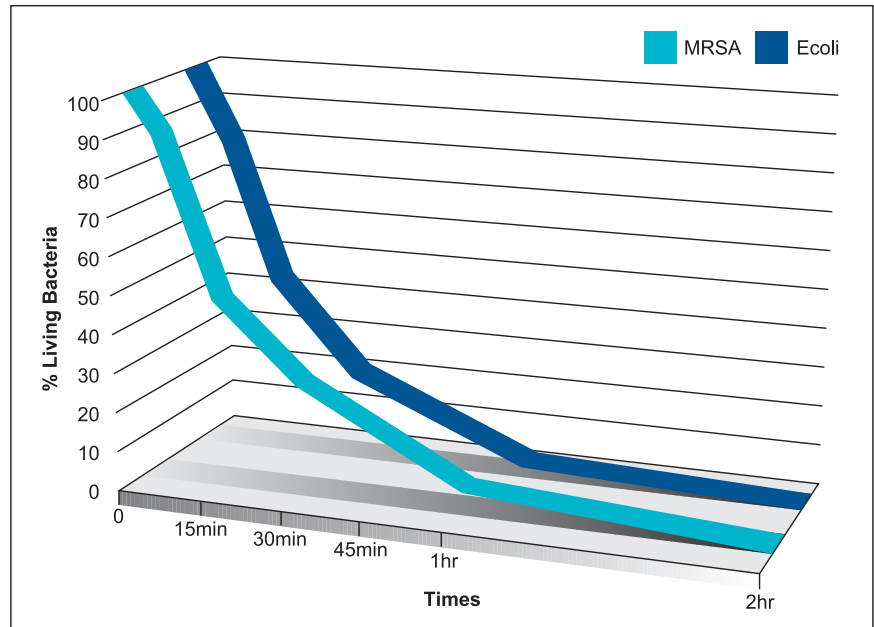


Resco Antibac Panel

# ANTIBAC PANEL

*Lifetime Protection*

**INDEPENDENT LABORATORY TESTED AND PROVEN TO DESTROY 99.99% OF SURFACE BACTERIA WITHIN 24HRS**



### RESULTS

Bacteria	Antibacterial Activity (Criteria greater than 2.0 log units 99%)
Escherichia coli	More than 6.2 log units
Methicillin-resistant Staphylococcus aureus (MRSA)	More than 4.1 log units
Pseudomonas aeruginosa	More than 6.1 log units
Staphylococcus aureus	More than 5.6 log units
Salmonella choleraesuis	More than 5.5 log units

### Test Method

Antibacterial performance is tested according to the international standard JIS Z 2801:2000 (Antimicrobial products - Test for antimicrobial activity and efficacy) an independent laboratory.

### Petri Dish results

The Petri Dish result shows clearly that there are still some Bacteria present on the control sample.

The Resco Antibac panel dish is clear, indicating the absence of Bacteria.

### Conclusion

Resco's Antibac panel's antibacterial surface, destroys the number of Bacteria on the surface up to 99.99% within 24 hours. Thus providing a proven, enduring hygienic solution for your applications.

**FACT: ANTIBAC CONTINUOUSLY DESTROYS BACTERIA FOR THE LIFETIME OF THE PANEL**

# RESOCO

Resco Ltd.  
12 Kahu Crescent, Te Rapa Park  
Hamilton 3200, New Zealand.  
Telephone: +64 7 850 1025  
(0800 800 950),  
Facsimile: +64 7 850 1026  
Email: info@resco.co.nz  
www.resco.co.nz