



POWDER & INDUSTRIAL COATINGS



POWDER & INDUSTRIAL COATINGS



DURALLOY
POWDERCOAT RANGE



DURATEC
POWDERCOAT RANGE



DURALLOY
POWDERCOAT RANGE



DURATEC
POWDERCOAT RANGE



Auckland

Dulux Powder & Industrial Coatings
31B Hillside Road
Glenfield Auckland 0627
PO Box 10 1886. N.S.M.C
Auckland 0745
New Zealand
Phone 0-9-441 8244
Fax 0-9-441 8242
Toll free 0800 800 975
Fax free 0800 476 9337
Email: powdernz@dulux.co.nz

Wellington

New Zealand
Phone 0-4-939 9226
Toll free 0800 800 975
Fax free 0800 476 9337

Christchurch

New Zealand
Phone 0-3-365 0871
Fax 0-3- 365 0873

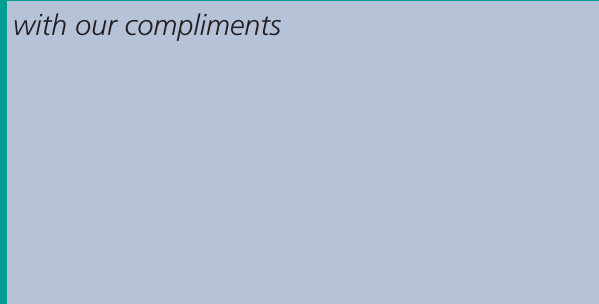
Australia

Dulux Powder & Industrial Coatings
1-15 Pound Road, West Dandenong South 3175
Australia
Phone: +61 3 8787 4500
Facsimile: +61 3 8787 4542
Email: powder@dulux.com.au
Website: www.duluxpowders.com.au



Visit our web site: www.duluxpowdercoatings.co.nz

with our compliments



your guide to
choosing colour
for aluminium
joinery



exquisite colours for aluminium joinery

This Colour Guide incorporates the very latest in powder coating technology coupled with the latest colours this technology makes possible. The colour range is chosen from old favourites and the very latest international colour trends and are arranged in a manner designed to make harmonious colour selection much easier.

Aluminium is the only warrantable substrate, but these powder coatings are equally at home on galvanised or mild steel.

Contents

Powder Coating Warranties	3
Choice, Specification & Roofing colours	4
Choosing	5
Premium Pearls	6-7
Brown	8-9
Blue	10-11
White / Yellow	12-13
Metropolis® Pearls	14-15
Electro	16-17
Black	18-19
Red / Light Grey	20-21
Green	22-23
Mannex®	24-25
Accent	26-27
Performance and quality assurance	28
Our 2 level performance guarantee	28
Dulux Registered Applicators	28
Care & Maintenance	29
Reflective & RGB Values	30-31
Contact us	32

Dulux and Other marks followed by ® are registered trademarks. Marks followed by ™ are trademarks.

DISCLAIMER: Any advice, recommendation, information, assistance or service provided by Dulux Powder & Industrial Coatings in relation to goods manufactured by it or their use and application is given in good faith and is believed by Dulux Powder & Industrial Coatings to be appropriate and reliable. However, any advice, recommendation, information, assistance or service provided by Dulux Powder & Industrial Coatings is provided without liability or responsibility PROVIDED THAT the foregoing shall not exclude, limit, restrict or modify the right entitlements and remedies conferred upon any person or the liabilities imposed upon Dulux Powder & Industrial Coatings by any condition or warranty implied by applicable legislation, regulation or other Government ordinance voiding or prohibiting such exclusion, limitation or modification. ©2016



powder coating warranties and the environment



DURALLOY® POWDERCOAT RANGE

- Extruded aluminium window & door joinery
- Residential and small commercial developments
- Building up to three levels above ground
- Properties greater than 100 meters from high tide level
- Where AAMA 2603 performance is desired
- Where a 10 year film and colour integrity warranty is required
- For projects outside these parameters, check with your Dulux® representative.



DURATEC® POWDERCOAT RANGE

- Extruded aluminium window & door joinery
- Prestigious residential and commercial developments
- All major architectural developments
- Properties greater than 10 meters from high tide level
- Welded aluminium sections greater than 100 meters from high tide level.
- Where AAMA 2604 performance is desired
- Where a 20 year durability warranty is required for film integrity (Colour integrity warranty will be less in duration and colour dependant).
- For projects outside these parameters, check with your Dulux® representative.



Worth doing...worth Dulux.®



more inspired colour choice

The Duralloy® colours shown in this guide have been specifically chosen by Dulux for their exterior durability and fade resistance. Depending on the chosen colour, the finishes available are either matt or satin, in either solid or pearlescent as replicated in the colour choice sections that follow.

It is recommended when choosing powder coating, to decide on a colour that will compliment both the exterior and the interior of your home.

specifying exactly the right colour

On occasions, some colours, whether powder, paints or furnishings may share the same colour name but be entirely different. This is especially true of other powder suppliers who use Dulux® colour names for their products, but the colours rarely match. When choosing colours, remember to specify both the Dulux® colour code and colour name.

Every effort has been made to present these colours as accurately as possible and as close as modern printing processes allow. Colour appearance may vary according to light source. Where colour accuracy is vital, a powder coated panel should be requested to more accurately demonstrate the effect you should get.

roofing colour co-ordinates

In New Zealand a number of pre-coated steel options are offered for roofing.

The Duralloy® range incorporates a range of colours designed to harmonise with these colours, but it should be noted that the powder coating colour will never be a perfect match to the roofing colour.

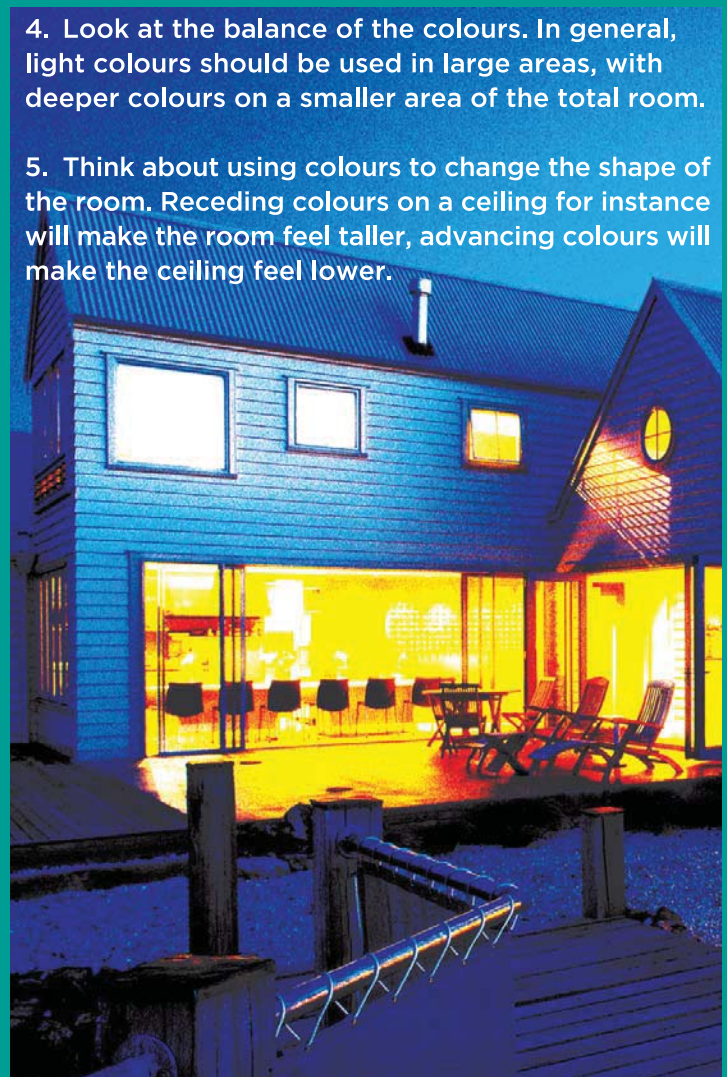
A number of brands of pre-coated steel in New Zealand offer colours with the same names, including New Denim Blue, Permanent Green, Terracotta, Karaka, Ironsand to name a few, but as these colours are supplied by different paint companies and are wet paint as opposed to powder coating, the colours will always only be similar at best and may vary from brand to brand.

Please check with your roofing company to determine that the colour chosen is available in the roofing material desired and check their colour against the Duralloy® co-ordinate.



choosing

1. Consider the aspect of the room. If the light is warm, cooler colours are often the first choice. If the light is cool, warmer colours add coziness.
2. Think about how the room is to be used and the atmosphere you want to create.
3. Select your main colour. Use existing furnishings as a starting point.
4. Look at the balance of the colours. In general, light colours should be used in large areas, with deeper colours on a smaller area of the total room.
5. Think about using colours to change the shape of the room. Receding colours on a ceiling for instance will make the room feel taller, advancing colours will make the ceiling feel lower.



POWDER & INDUSTRIAL COATINGS

Disclaimer:

The colours in this brochure are indicative only. They are as close to actual product colours as modern printing techniques allow and they have been matched in natural outdoor lighting conditions. Colour appearance may vary according to light source.

® Dulux, Duralloy, Metropolis and Precious are registered trade marks of Dulux Powder & Industrial Coatings.



premium pearls

MATT CHAMPAGNE KINETIC®

9153059K  DURALLOY®

9003059K  DURATEC®

COPPER METALLIC KINETIC®

9157183K  DURALLOY®

9007183K  DURATEC®

ST ELMO'S FIRE KINETIC®

9157208K  DURALLOY®

9007208K  DURATEC®

PLATYPUS KINETIC®

9157214K  DURALLOY®

9007214K  DURATEC®

OCEANS 12 KINETIC®

9157210K  DURALLOY®

9007210K  DURATEC®

GUNMETAL METALLIC KINETIC®

9158115K  DURALLOY®

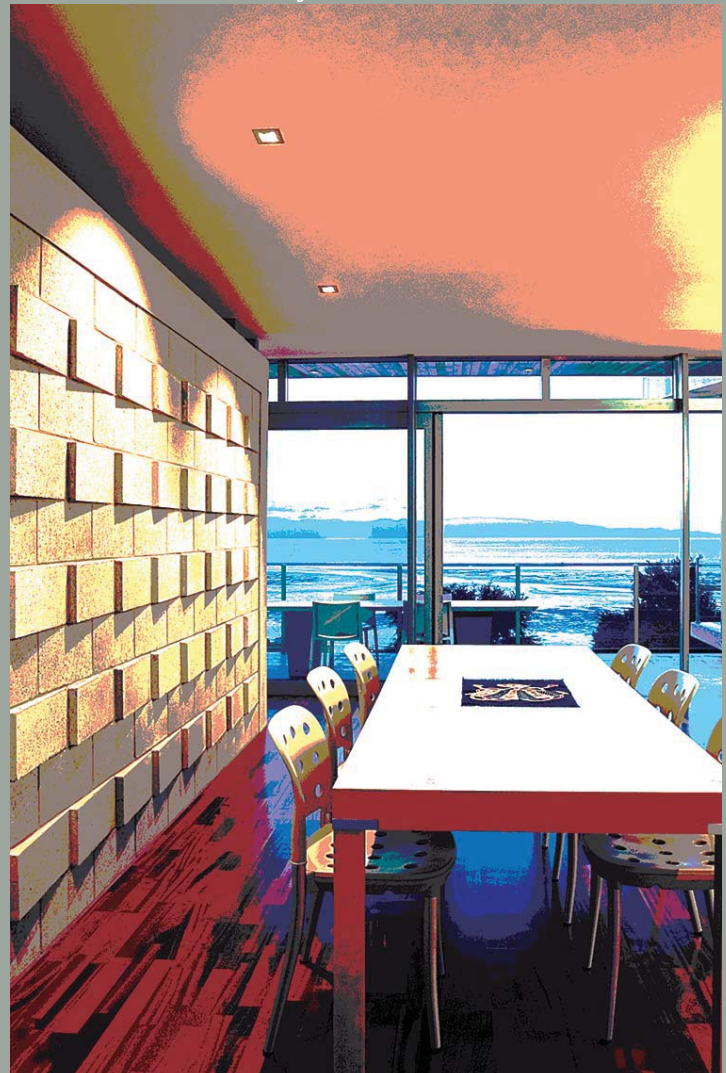
9008115K  DURATEC®

k

metallic/pearlescent finishes

The Premium Pearl offering utilises Dulux's Kinetic® Technology in both Duralloy and Duratec chemistry. The Kinetic® technology increases the ease of application and allows Dulux to present a finish that is not only very uniform, but also delivers a coating that has sparkle and movement in its appearance. This characteristic may mean that the appearance of the colour can change in different lighting and viewing angles or where the coated substrate is in several different planes.

Our Premium Pearls may be a little more expensive than your average run of the mill colour, but then these Premium Pearls are not your usual run of the mill colours.



Dulux®

POWDER & INDUSTRIAL COATINGS



DURALLOY & DURATEC® AVAILABLE AS AN EX STOCK COLOUR

Please take time to check an actual powder coated sample of the colour of your choice



LSG MATT DESERT SAND

9153065M  DURALLOY®
9003065M  DURATEC®

LSG MATT BRONCO

9152111M  DURALLOY®
9002111M  DURATEC®

MATT STONE

9153153M  DURALLOY®

MATT KAURI

9158159M  DURALLOY®

MATT SORRELL

9154242M  DURALLOY®

MATT THUNDER GREY

9157324M  DURALLOY®

LSG MATT LIGNITE

9158033M  DURALLOY®

LSG MATT IRONSAND

9158096M  DURALLOY®
9008109M  DURATEC®

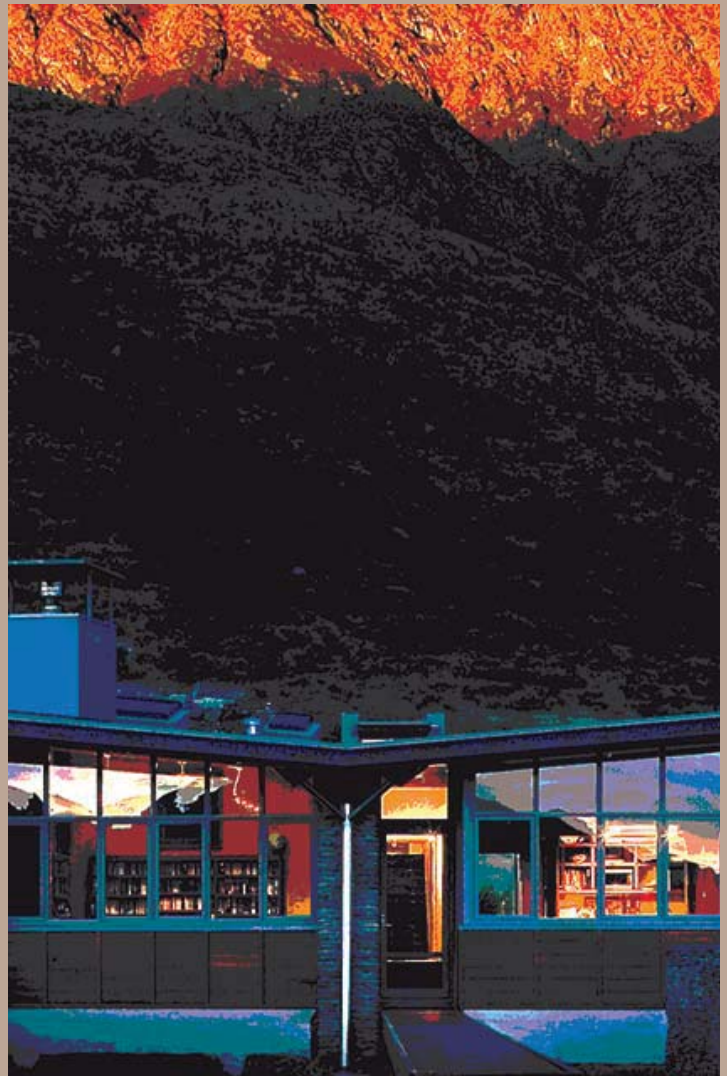
MATT OLIVE

9156193M  DURALLOY®



brown

Now we have these beautiful matt finishes, the popularity of the brown range has increased substantially. Our Brown range contains the sort of colours that go anywhere and only enhance the colours around them. Reflecting their popularity, we have a large range of Bronze/Brown/Beige colours in our offering. See also the Metropolis and Electro ranges.



DURALLOY & DURATEC® AVAILABLE AS AN EX STOCK COLOUR

Please take time to check an actual powder coated sample of the colour of your choice

b

MATT BLUE FIN
9155213M  DURALLOY®

MATT WEDGEWOOD
9155247M  DURALLOY®

MATT AZURE
9155249M  DURALLOY®

MATT WIZARD
9155197M  DURALLOY®

MATT INDIGO BLUE
9155266M  DURALLOY®

LSG MATT NEW DENIM BLUE
9155063M  DURALLOY®
9005063M  DURATEC®

MATT STORM BLUE
9155248M  DURALLOY®

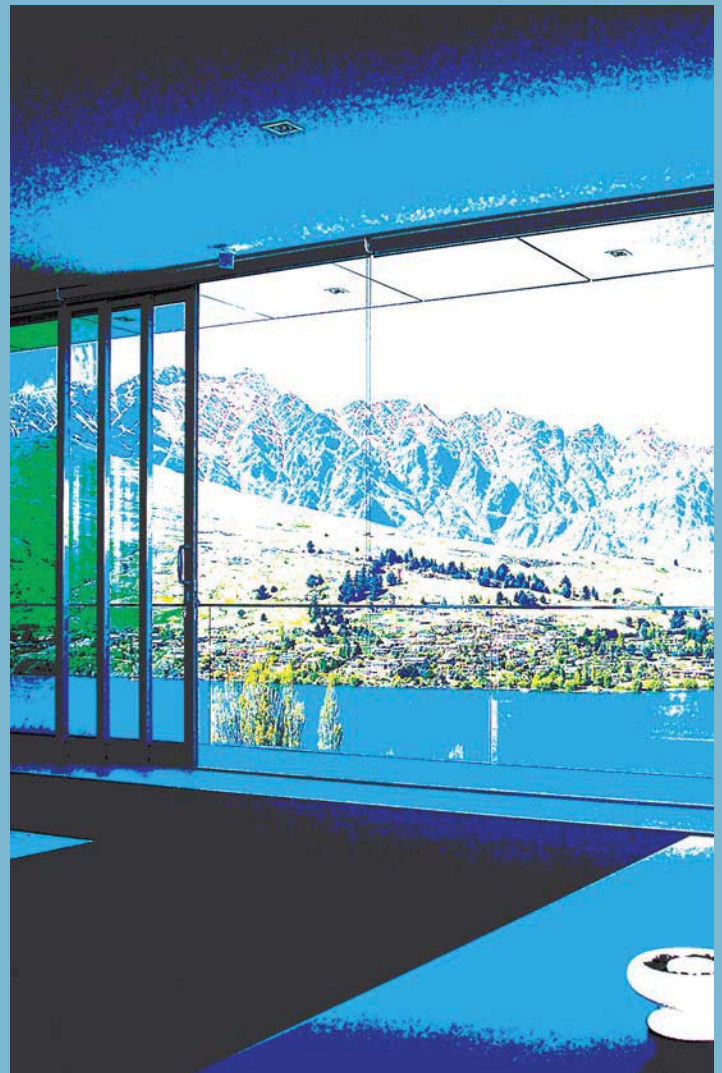
MATT SLATE BLUE
9155147M  DURALLOY®

MATT NAVY
9155234M  DURALLOY®

b

blue

Blues can give a tranquil, serene feeling, they are calming and soothing, whilst also imbuing a sense of authority to a colour scheme. There is a wide range of blues in our colour offer, from the new Matt Blue Fin through to the intense Matt Navy. In the Electro range there is also the vibrant Blue Suede Shoes and Subtle Blue.



Please take time to check an actual powder coated sample of the colour of your choice

W

MATT APPLIANCE WHITE

9151274M  DURALLOY®

9001274M  DURATEC®

ARCTIC WHITE

91558851  DURALLOY®

90058851  DURATEC®

MATT TUSK TUSK

9153154M  DURALLOY®

MATT WOODWIND

9153155M  DURALLOY®

MATT OFF WHITE

9153144M  DURALLOY®

9003144M  DURATEC®

MATT SMOOTH CREAM

9152186M  DURALLOY®

MATT RIVERGUM BEIGE

9153143M  DURALLOY®

MATT ALMOND

9153141M  DURALLOY®

MATT MAGNOLIA

9153142M  DURALLOY®



DURALLOY & DURATEC® AVAILABLE AS AN EX STOCK COLOUR

W

white

Whites are ideal for creating clean classical borders to your colour scheme. Our Whites range from the blue white of Arctic White through to the warmth of Almond and Magnolia. Appliance White is a natural white while Tusk Tusk, Woodwind and Off White are classical light beige colours ideal for imparting warmth and friendliness to a total colour scheme.



POWDER & INDUSTRIAL COATINGS

Please take time to check an actual powder coated sample of the colour of your choice

m

METROPOLIS WARM WHITE PEARL KINETIC®

9152075K  DURALLOY®

9001173K  DURATEC®

METROPOLIS SILVER PEARL KINETIC®

9157113K  DURALLOY®

9007317K  DURATEC®

SILVER STAR KINETIC®

9157043K  DURALLOY®

9007335K  DURATEC®

CHAMPERS KINETIC®

9153184K  DURALLOY®

TUATARA KINETIC®

9157572K  DURALLOY®

MINERAL BROWN KINETIC®

9158204K  DURALLOY®

WINDOW BRONZE KINETIC®

9158068K  DURALLOY®

9008068K  DURATEC®

METROPOLIS ELECTRIC COW MATT KINETIC®

9158028K  DURALLOY®

9008153K  DURATEC®

METROPOLIS COAL DUST KINETIC®

9159069K  DURALLOY®

9009100K  DURATEC®



DURALLOY & DURATEC® AVAILABLE AS AN EX STOCK COLOUR

p

metropolis® pearls

The Metropolis Range of Pearls includes some of the most popular trim colours including Metropolis Silver Pearl, Silver Star, Window Bronze and the wonderful Electric Cow. The entire Metropolis Range has a pearlescent or metallic content that brings the coating to life, sparkling in the sunshine.

For technical reasons associated with colour reproduction, the colours shown give only an indication of shade and pearl content. No guarantee can be given that they will exactly match the powder product.



POWDER & INDUSTRIAL COATINGS

Please take time to check an actual powder coated sample of the colour of your choice



ELECTRO™

POWDERCOAT RANGE

Made from high durability, UV resistant raw materials, the tough yet flexible Electro® range of powder coatings, when applied by a 'registered applicator' on architectural aluminium, can carry a 20 year, exterior durability, performance warranty.



ELECTRO™

POWDERCOAT RANGE

FLAT WHITE
9061200F

BLUEIT
9065302K

CLEAN LINEN
9061302K

BLUE GOLD
9065301K

SILVER REIGN
9067614K

POYPLE
9065304K

VENERABLE SILVER
9067621K

GREEN LANTERN
9066342K

CANARY
9062209K

TIBERIUS
9062210K

BRIGHT SPARK
9062205K

BURNISHED COPPER
9068185K

FRED
9064164K

MEDIUM BRONZE
9068183K

SENSATIONAL CHAMPAGNE
9063187K

DARK BRONZE
9068184K

BRILLIANCE
9068281K

BLUE NIGHT
9065303K

FRESH GOLD
9062208K

BLACK ACE
9069116F



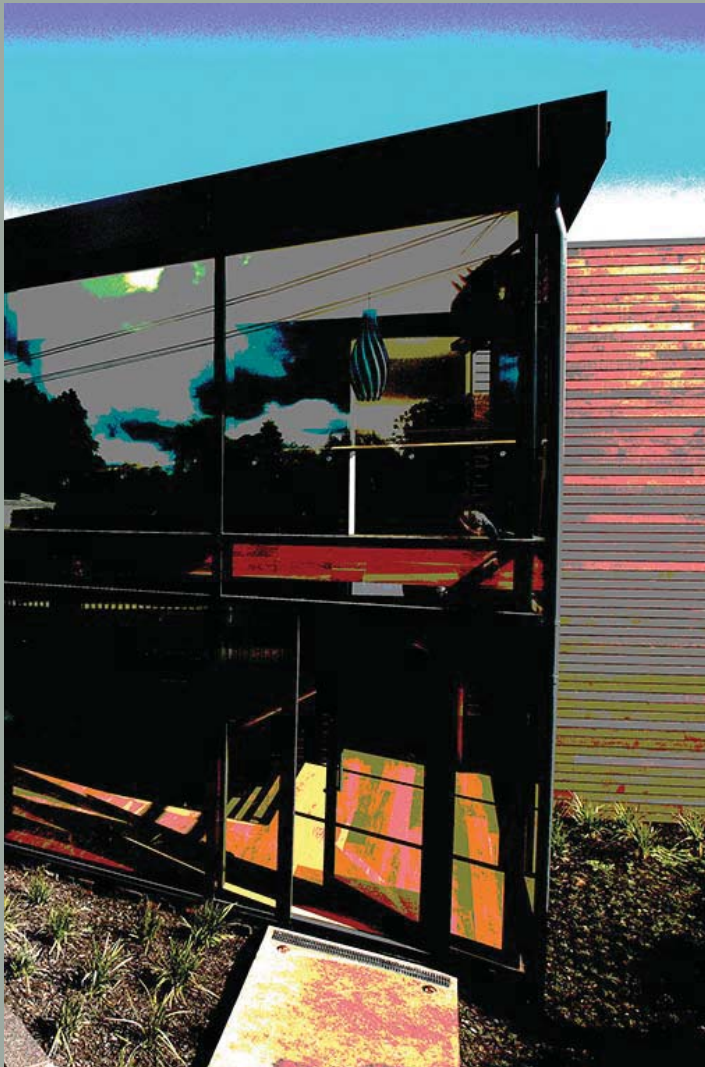
Please take time to check an actual powder coated sample of the colour of your choice

REFER TO ELECTRO2 BROCHURE FOR ADDITIONAL INFORMATION

b

black

The most powerful colour, although technically not a colour at all, black can conjure up images of mystery, or elegance and sleek sophistication. The strength of black is often emphasised by using it with white. Black and white tiles, or a high gloss black front door convey a universal message of style and sophistication.



Please take time to check an actual powder coated sample of the colour of your choice

b

MATT TRANSFORMER GREY

 DURALLOY® 9157548M

LSG MATT SANDSTONE GREY

 DURALLOY® 9157217M

 DURATEC® 9007217M

MATT MID GREY

 DURALLOY® 9157551M

MATT FLINT

 DURALLOY® 9157484M

LSG MATT GREY FRIARS

 DURALLOY® 9157167M

 DURATEC® 9007167M

LSG MATT CHARCOAL

 DURALLOY® 9159058M

 DURATEC® 9009081M

MATT GRAVEL

 DURALLOY® 9157404M

SATIN BLACK

 DURALLOY® 9155865I

LSG MATT BLACK

 DURALLOY® 9159041M

 DURATEC® 9009718I



DURALLOY & DURATEC® AVAILABLE AS AN EX STOCK COLOUR

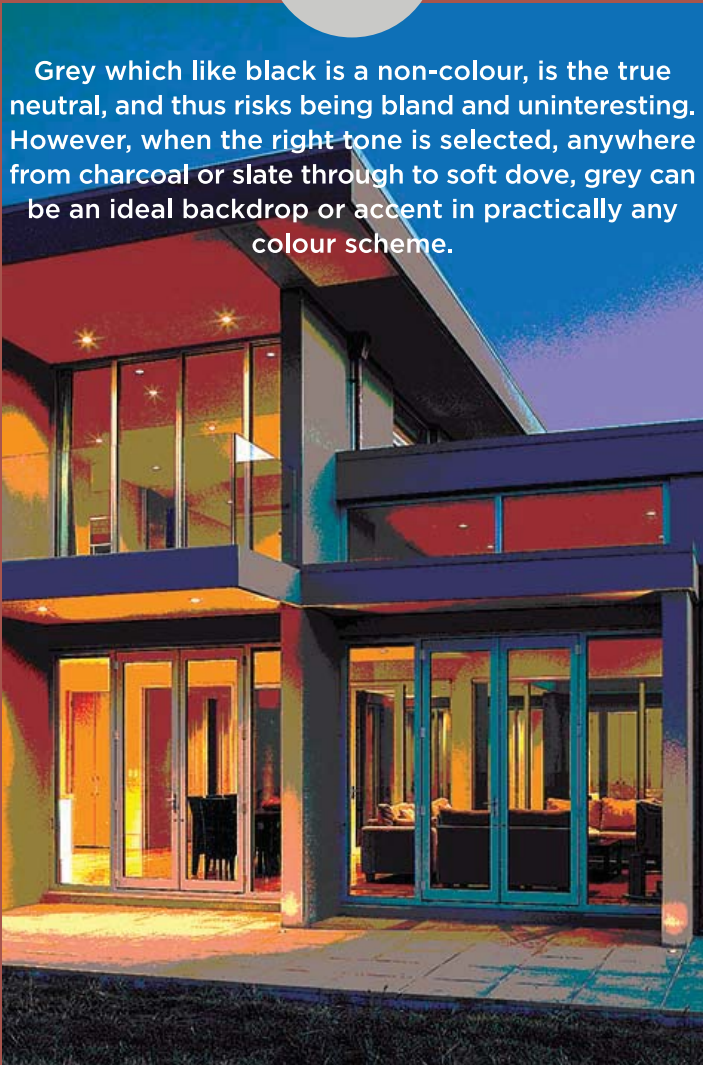
r

red•light grey

Reds, Corals & Pinks are warm, vibrant colours that create a sense of intimacy and strength. Ranging from soft shades of coral and pink to bold, aggressive reds, these are colours that should be used with care. The paler tones are cheerful colours that reflect light to warm or brighten cool or dark rooms.

g

Grey which like black is a non-colour, is the true neutral, and thus risks being bland and uninteresting. However, when the right tone is selected, anywhere from charcoal or slate through to soft dove, grey can be an ideal backdrop or accent in practically any colour scheme.



Dulux®

POWDER & INDUSTRIAL COATINGS

Please take time to check an actual powder coated sample of the colour of your choice

r

g

MATT TERRACOTTA

10 DURALLOY® 9158244M

COLA RED

10 DURALLOY® 91556995

MATT PIONEER RED

10 DURALLOY® 9154194M

LSG MATT SCORIA

10 DURALLOY® 9154114M

LSG MATT TITANIA

10 DURALLOY® 9152068M

20 DURATEC® 9002068M

LSG MATT CANVAS CLOTH

10 DURALLOY® 9157327M

20 DURATEC® 9007327M

MATT O'KEEFE GREY

10 DURALLOY® 9157400M

MATT GULL GREY

10 DURALLOY® 9157511M

MATT GHOST GREY

10 DURALLOY® 9157401M

10 DURALLOY®
POWDER COAT RANGE

20 DURATEC®
POWDER COAT RANGE

DURALLOY & DURATEC® AVAILABLE AS AN EX STOCK COLOUR

g

green

Currently the most popular decorating colour, green symbolizes nature. It is the easiest colour on the eye and can improve vision. It is a calming, refreshing colour. People waiting to appear on TV sit in "green rooms" to relax. Hospitals often use green because it relaxes patients. Dark green is masculine and conservative. Greens can be fresh & fruity, acid lime or warm and relaxing olives.



Please take time to check an actual powder coated sample of the colour of your choice

g

MATT BONE WHITE

10 DURALLOY® 9157304M

LSG MATT LICHEN

10 DURALLOY® 9156101M

LSG MATT MIST GREEN

10 DURALLOY® 9156103M

MATT STROMBOLI

10 DURALLOY® 9156299M

BOND RIVERGUM

10 DURALLOY® 91552027

LSG MATT PERMANENT GREEN

10 DURALLOY® 9156102M

MATT DEEP TEAL

10 DURALLOY® 9156298M

LSG MATT KARAKA

10 DURALLOY® 9156064M

MATT RANGOON GREEN

10 DURALLOY® 9156259M



DURALLOY®
POWDERCOAT RANGE



DURATEC®
POWDERCOAT RANGE

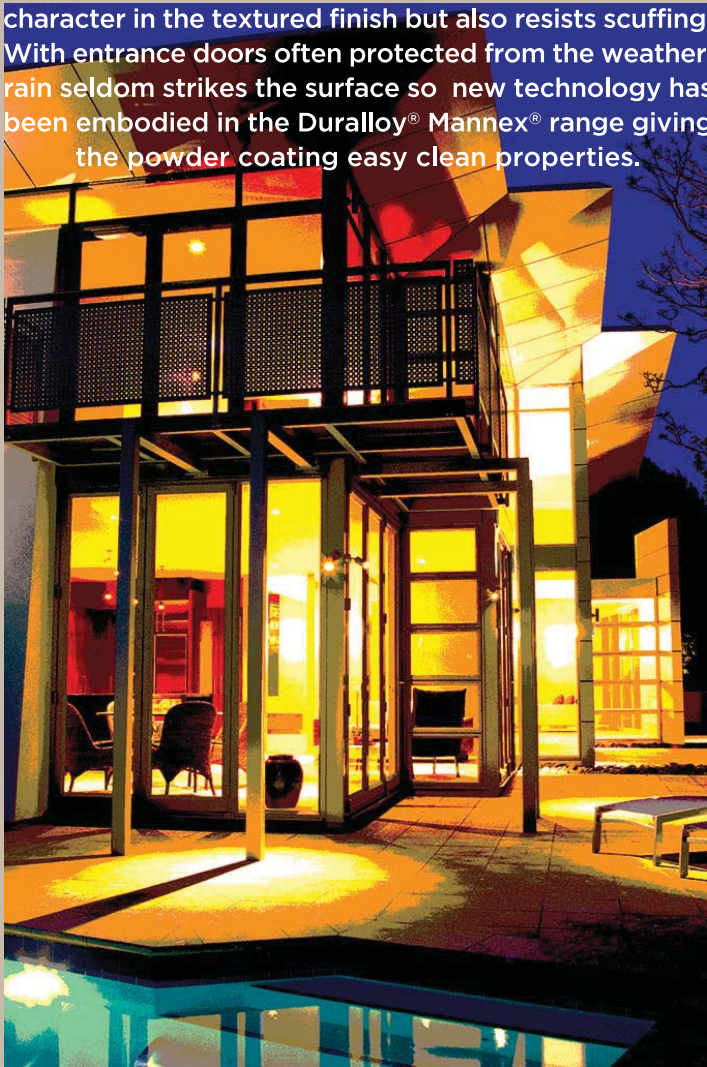
DURALLOY & DURATEC® AVAILABLE AS AN EX STOCK COLOUR



mannex

The Duralloy Mannex® range has been designed especially for entrance doors, to add an extra little pizzazz to an area that is often a feature in terms of colour and design.

The Duralloy® Mannex® Range have been specially formulated as a tactile textured finish, that plays with the light and gives depth and interest to the surface. These specially chosen finishes have been formulated to be a hard durable film that displays a depth of character in the textured finish but also resists scuffing. With entrance doors often protected from the weather, rain seldom strikes the surface so new technology has been embodied in the Duralloy® Mannex® range giving the powder coating easy clean properties.

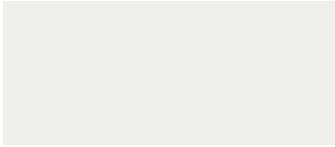


Please take time to check an actual powder coated sample of the colour of your choice



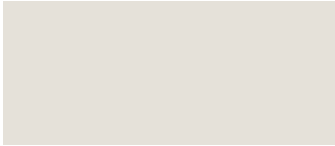
MANNEX APPLIANCE WHITE

DURALLOY® 9151171Z



MANNEX TITANIA

DURALLOY® 9153043Z



MANNEX METRO SILVER PEARL

DURALLOY® 9157158Z



MANNEX BRONCO

DURALLOY® 9153045Z



MANNEX SANDSTONE GREY

DURALLOY® 9157156Z



MANNEX GREY FRIARS

DURALLOY® 9157157Z



MANNEX CHARCOAL

DURALLOY® 9159055Z



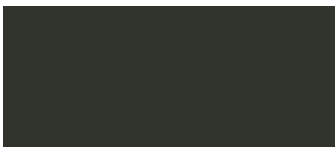
MANNEX IRONSAND

DURALLOY® 9158083Z



MANNEX MATT BLACK

DURALLOY® 9159056Z



DURALLOY & DURATEC® AVAILABLE AS AN EX STOCK COLOUR



Accent

The range of accent colours have been added to the Duralloy range as demand increased for colours brighter than the usual range of colours offered, colours that could be used to compliment the overall colour scheme.

Whilst these colours may be used for joinery, the accent range was initially used for architectural features, such as entrance doors, aluminium louvres and panels.



Please take time to check an actual powder coated sample of the colour of your choice



MATT JAY
9157591M



MATT WASP
9152203M



MATT BLUESEYE
9155286M



MATT AQUARIUM
9156329M



MATT POUNAMU
9156330M



MATT TOMCAT
9154303M



MATT DIJON
9156328M



MATT KODIAK
9158269M



MATT POHUTUKAWA
9154298M



performance and quality assurance

Dulux Powder & Industrial Coatings, manufacturer of Dulux branded powder coating, is committed to providing products that strictly adhere to the ISO standard for quality management. The result is a range of powder coatings, that simply work better in New Zealand's unique climatic conditions.

our two level performance guarantee

1. The first covers film integrity, which is a warranty that the film will not peel or crack or flake, when applied by a Dulux Registered Applicator. The Duralloy products in this guide can carry a warranty of 10 years film integrity, the Duratec products 20 years film integrity on extruded aluminium.
2. Secondly, and one most customers assume is warranted, colour performance. This is simply the ability of the coating to retain its colour and performance within stated parameters for a given period.

The Duralloy products featured here all have a colour performance warranty of 10 years, the Duratec products 15 years, when applied to residential and commercial aluminium sections by a Dulux Registered Applicator.

Dulux registered applicators

All the warranties offered by Dulux[®] in this booklet are conditional on the powder coatings being applied by Dulux Registered Aluminium Applicators. These applicators are only certified after demonstrating their capability to meet stringent quality conditions and international standards.

Each registered aluminium applicator has invested heavily in their business to guarantee their performance in preparing the aluminium and applying the premium Dulux[®] finishes shown in this guide.



care & maintenance

To comply with warranty requirements and to extend the effective life of powder coatings, a very simple regular maintenance programme should be implemented.

- 1 Carefully remove any loose deposits with a wet sponge.
- 2 Use a soft brush (non abrasive) and a mild household detergent solution to remove dust, salt and other deposits.
- 3 Rinse off with clean fresh water.

Do remove obvious deposits as they occur.

Do mask windows if painting.

Use only Methylated Spirits, Isopropanol or water to remove fresh paint splashes, **Do not** subject your joinery to over vigorous rubbing.

Do not use abrasive-steel wool, scrapers, scouring liquids or powders to remove paint splashes - these will damage your powder coating.

Do not use aggressive solvents-thinners, petrol etc. these solvents will attack gloss levels and reduce the powder coatings life expectancy.

Do not expose your joinery to excessive heat- heaters or hot air guns - these may damage the powder coating.

If through some misadventure your powder coated aluminium joinery is scratched or damaged, don't panic. Dulux[®] colour Repair Kits are available.

Do contact Dulux[®] Powder & Industrial Coatings on 0800 800 975 for further information or advice.

take care at installation time

Your window manufacturer puts considerable effort into protecting your powder coated joinery right through to installation time, however it is at this time that your joinery is perhaps most at risk of damage. For this reason your window manufacturer uses stickers, recommended by the Window Association of New Zealand, to help to protect their product.

WARNING

All Trades

This valuable joinery and glass will suffer permanent damage from

Plaster Splashes & runoff
Mortar Splashes & runoff
Paint Splashes

Protect! - if mortar splashes occur, or contaminants such as sunscreen are present: **immediately** wash joinery with plenty of clean water. For paint splashes spot clean with methylated spirits and then wash with plenty of clean water.

Do not allow splashes to harden.

Do not use any other solvents.

Do not use scrapers.

Do not allow water runoff from plaster and any mortar to flow onto windows - **DAMAGE WILL RESULT!** Always fully mask with an approved tape, and tape all joinery until mortar is sealed and painted.

DO NOT REMOVE THIS LABEL until the final clean is completed. Removing this label before the final clean may void any applicable warranty. Homeowners should obtain a copy of the care and maintenance instructions from their window supplier.

For further information visit www.wanz.org.nz



All the activity on a construction site means that your window joinery may get knocked or scratched, splattered with mortar, plaster, textured coating or paint during the later stages of construction. Please ensure that your window and door joinery is masked at this time. It is far easier to prevent accidents than to try and correct them.

Should your joinery receive mortar or paint splashes see that these are removed before cure and follow the instruction contained in this colour card or in the Dulux[®] Powder & Industrial Coatings Use and Care brochure.

reflective (Irv) & rgb values

MATERIAL	PAGE	LRV	R	G	B	
9153141M	ALMOND MATT	12	62	214	196	173
9151171Z	APPLIANCE WHITE MANNEX	25	88	240	241	239
9151274M	APPLIANCE WHITE MATT	12	88	240	241	239
9156329M	AQUARIUM MATT	27	30	93	160	163
91558851	ARCTIC WHITE	12	84	225	232	239
9155249M	AZURE MATT	10	18	77	109	125
9159041M	BLACK LSG MATT	19	4,6	43	43	44
9069116F	BLACK ACE ELECTRO	17	4,4	58,9	59,5	59,8
9155213M	BLUE FIN MATT	10	26	108	153	188
9065301K	BLUE GOLD ELECTRO	17	20	111	128	122
9065303K	BLUE NIGHT ELECTRO	17	6	67	68	71
9065302K	BLUEIT ELECTRO	17	15	40	117	146
9155286M	BLUESEYE MATT	27	32	127	158	171
91552027	BOND RIVERGUM	23	17	98	110	98
9157304M	BONE WHITE MATT	23	50	182	182	168
9062205K	BRIGHT SPARK ELECTRO	16	43	226	165	62
9068281K	BRILLIANCE ELECTRO	16	14	112	102	90
9153045Z	BRONCO MANNEX	25	39	167	157	143
9152111M	BRONCO LSG MATT	8	37	169	158	143
9068185K	BURNISHED COPPER ELECTRO	17	7,7	92,5	74,6	70,7
9062209K	CANARY ELECTRO	16	54	234	188	69
9157327M	CANVAS CLOTH LSG MATT	21	65	210	205	192
9153059K	CHAMPAGNE KINETIC [®] MATT	6	32	163	153	140
9153184K	CHAMPERS Kinetic	14	35	156	146	136
9159055Z	CHARCOAL MANNEX	25	8	62	65	69
9159058M	CHARCOAL LSG MATT	19	8	61	64	67
9061302K	CLEAN LINEN ELECTRO	16	70	219	219	212
91556995	COLA RED	21	17	198	48	53
9157183K	COPPER METALLIC KINETIC [®]	6	34	157	146	136
9068184K	DARK BRONZE ELECTRO	17	6,2	76,8	69,2	63,5
9156298M	DEEP TEAL MATT	23	9	41	78	77
9153065M	DESERT SAND G.2 LSG MATT	8	43	188	170	146
9156328M	DIJON MATT	27	41	191	172	84
9061200F	FLAT WHITE ELECTRO	16	86,3	236,3	240	236,9
9157484M	FLINT MATT	19	12	89	92	96
9064164K	FRED ELECTRO	16	14	178	66	66
9062208K	FRESH GOLD ELECTRO	16	24	150	131	107
9157401M	GHOST GREY MATT	21	45	173	175	175
9157404M	GRAVEL MATT	19	7	54	56	59
9066342K	GREEN LANTERN ELECTRO	17	8	76	81	72
9157167M	GREY FRIARS LSG MATT	19	10	71	74	77
9157157Z	GREY FRIARS MANNEX	25	10	71	75	79
9157511M	GULL GREY MATT	21	47	172	176	173
9158115K	GUNMETAL METALLIC KINETIC [®]	6	10	76	75	71
9155266M	INDIGO BLUE MATT	10	11	74	78	84
9158096M	IRONSAND LSG MATT	8	8	65	65	63
9158083Z	IRONSAND MANNEX	25	8	64	63	61
9157591M	JAY MATT	27	30	137	153	154
9156064M	KARAKA LSG MATT	23	7	59	61	54
9158159M	KAURI MATT	8	20	129	112	93
9158269M	KODIAK MATT	27	10	85	82	10
9156101M	LICHEN LSG MATT	23	26	136	128	107
9158033M	LIGNITE G.2 LSG MATT	8	9	77	68	62
9153142M	MAGNOLIA MATT	12	60	217	203	169

reflective (Irv) & rgb values

MATERIAL	PAGE	LRV	R	G	B	
9159056Z	MATT BLACK MANNEX	25	4	43	43	44
9068183K	MEDIUM BRONZE ELECTRO	17	11,3	103,4	92,6	80,2
9157158Z	METRO SILVER PEARL MANNEX	25	43	164	166	163
9159069K	METROPOLIS COAL DUST KINETIC [®]	14	8	59	62	65
9158028K	METROPOLIS ELECTRIC COW MATT K	14	9	71	70	68
9157113K	METROPOLIS SILVER PEARL KINETIC [®]	14	41	163	164	159
9152075K	METROPOLIS WARM WHITE PEARL KINETIC [®]	14	88	240	240	231
9157551M	MID GREY MATT	19	24	118	119	116
9158204K	MINERAL BROWN	14	20	114	110	105
9156103M	MIST GREEN LSG MATT	23	24	116	126	106
9155234M	NAVY MATT	10	6	43	57	78
9155063M	NEW DENIM BLUE LSG MATT	10	10	70	76	83
9157210K	OCEANS 12 KINETIC [®]	6	28	126	136	127
9153144M	OFF WHITE MATT	12	73	232	223	200
9157400M	O'KEEFE GREY MATT	21	57	193	187	176
9156193M	OLIVE MATT	8	7	61	56	50
9156102M	PERMANENT GREEN LSG MATT	23	10	55	80	70
9154194M	PIONEER RED MATT	21	12	129	63	57
9157214K	PLATYPUS KINETIC [®]	6	30	141	137	131
9154298M	POHUTUKAWA MATT	27	10	133	68	67
9156330M	POUNAMU MATT	27	16	33	126	109
9065304K	POYPLE ELECTRO	17	15	114	105	109
9156259M	RANGOON GREEN MATT	23	5	57	62	56
9153143M	RIVERGUM BEIGE MATT	12	64	216	202	184
9157217M	SANDSTONE GREY LSG MATT	19	25	125	125	123
9157156Z	SANDSTONE GREY MANNEX	25	25	125	125	123
91558651	SATIN BLACK	19	4	44	44	45
9154114M	SCORIA LSG MATT	21	9	103	59	54
9063187K	SENSATIONAL CHAMPAGNE ELECTRO	16	26	148	138	125
9067614K	SILVER REIGN ELECTRO	16	42	170	175	173
9157043K	SILVER STAR KINETIC [®]	14	35	148	151	150
9155147M	SLATE BLUE MATT	10	7	56	64	77
9152186M	SMOOTH CREAM MATT	12	68	229	209	170
9154242M	SORRELL MATT	8	15	103	95	85
9157208K	ST ELMO'S FIRE KINETIC [®]	6	34	145	147	148
9153153M	STONE MATT	8	31	152	137	121
9155248M	STORM BLUE MATT	10	9	62	73	84
9156299M	STROMBOLI MATT	23	18	85	117	112
9158244M	TERRACOTTA MATT	21	20	164	102	75
9157324M	THUNDER GREY MATT	8	12	85	85	79
9062210K	TIBERIUS ELECTRO	17	12	109	94	65
9152068M	TITANIA LSG MATT	21	69	215	212	200
9153043Z	TITANIA MANNEX	25	69	215	213	203
9154303M	TOMCAT MATT	27	20	194	98	64
9157548M	TRANSFORMER GREY MATT	19	29	127	139	131
9157572K	TUATARA KINETIC [®]	14	32	155	153	148
9153154M	TUSK TUSK MATT	12	79	239	227	210
9067621K	VENERABLE SILVER ELECTRO	16	21	125	127	128
9152203M	WASP MATT	27	41	211	163	93
9155247M	WEDGEWOOD MATT	10	20	88	119	148
9158068K	WINDOW BRONZE KINETIC [®]	14	10	79	73	69
9155197M	WIZARD MATT	10	12	73	92	102
9153155M	WOODWIND MATT	12	74	226	218	204