

KindyCube

Child friendly cubicle systems



PRODUCT TECHNICAL STATEMENT

Specifics about the system

- Optimised height using 1/4 sheets.
- Bull nosed edges and radius edges to prevent injury to users.
- Full height channels to allow strong fixing into walls.
- Our partitions are fixed to the walls at multiple locations using a full height U-channel. Please allow for a stud or full height fixings in the wall at every location where the partitions meet the wall.

Panel Information

- All Antibac panels are sourced from an ISO 9001 approved company.
- All panels are made to International Standards EN 438-2: 2005.
- No halogen, biocides, pesticides, heavy metals (e.g. lead, cadmium, chromiumVI, mercury), or plasticisers are used in the production of AntiBac panels.
- Virgin raw materials are used in the manufacture of all Antibac panels.
- All kraft paper used in the manufacture of Antibac panels is sourced from renewable forests.
- All Antibac panels are Greenguard certified and will contribute to points in the Greenstar rating system.
- All panels are anti-microbial and will actively kill 99.99% of bacteria, fungi and viruses within 24 hours.
- We offer a 10 year guarantee on panel integrity.

PANEL COLOUR OPTIONS

- KindyCube is available in:
- 12 AntiBac stock colours.

- 20 AntiBac Designer colours – 12 week lead time.
 - 16 Laminex colours.
- For a full list go to www.resco.co.nz/colours

Aluminium information

- WALL CHANNELS: : Interpon powder coated continuous full height 42mm x 20mm extruded aluminium 6060 alloy A-866 wall channels.

ALUMINIUM COLOUR OPTIONS

The Kindycube aluminium extrusions are available in any of the Interpon powder coating colour range or Silver Anodising. Our standard colour is Silver Pearl.

Building Code Compliance

B2.3.1 DURABILITY

Resco's products exceed requirements. Our systems are made using Compact Laminate panels that have 10 year warranty, however we expect these panels to have a serviceable life of 20+ years. (Examples: Orewa top 10 Holiday Park – over 20 years old & Waikato Stadium - over 16 years old).

E3.2, E3.3.4 INTERNAL MOISTURE

Resco's products comply with these requirements. Our products are made from panels that have silver-ion technology. Panels actively kill up to 99% of bacteria within 2 hours for the life of the panel. The panels are

waterproof and perfect for wet areas. (Tested to ISO 22196:2011, EN 438 4:2005).

GI.3.2 PERSONAL HYGIENE

Resco's products comply with these requirements. The design of Resco systems are unique, they have fewer dirt traps, improve privacy and easier to clean.

GREENSTAR V3.1 - MAT-4

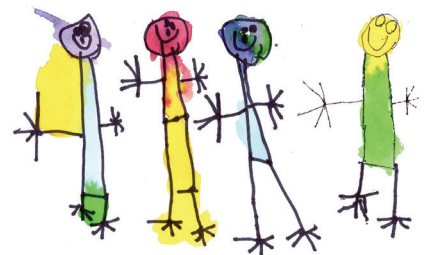
Improves interior air quality by reducing VOC and Formaldehyde emissions. (Greenguard gold certification).

LIVING BUILDING CHALLENGE

Resco's Antibac panels are free of the ingredients appearing in the Red List Summary of the Living Building Challenge (Supplier declaration).

NZBC CVM2/AS2-AS7

Resco's panels are suitable for application in rooms with intermittent use. We typically propose our systems in toilet and shower blocks. (BRANZ testing FH 5110 - Group 3 rating).



RESOCO

RESOCO
ANTIBAC PANEL
Lifetime Protection

KindyCube

Child friendly cubicle systems



PRODUCT TECHNICAL STATEMENT

Hardware information

MATERIAL

- Nylon coated zinc alloy.

FINISH

- Grey nylon.

MOUNTING

- Screw fixed.
- Surface mounted.

FEATURES

- Gravity assisted door opening/door closing.
- 2x Gravity hinges.
- 2x Angle brackets to fit fascias to division panels.
- Adjustable Pedestals to support fascia panels.
- 1x Toilet roll holders.

Dimension details

As cubicles are custom made to your measurements, depths and widths can be varied to suit, while complying with the NZ building code.

The KindyCube standard dimensions are:

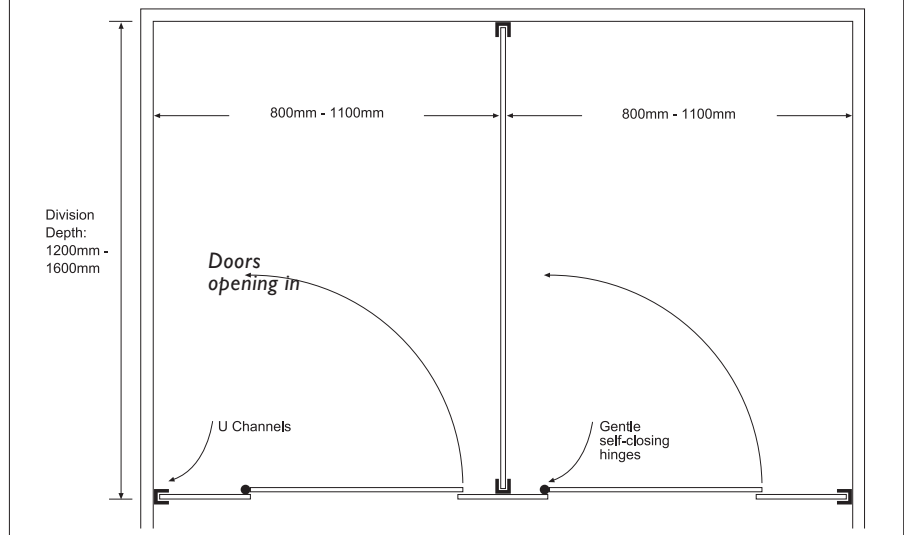
- Height 1050 mm with 150 mm floor clearance.
- Depth 1200 mm -1600 mm.
- Standard cubicles are recommended in an open-in door option.
- Standard cubicle doors are 525 mm (opening 450mm -500 mm).

Warranty information

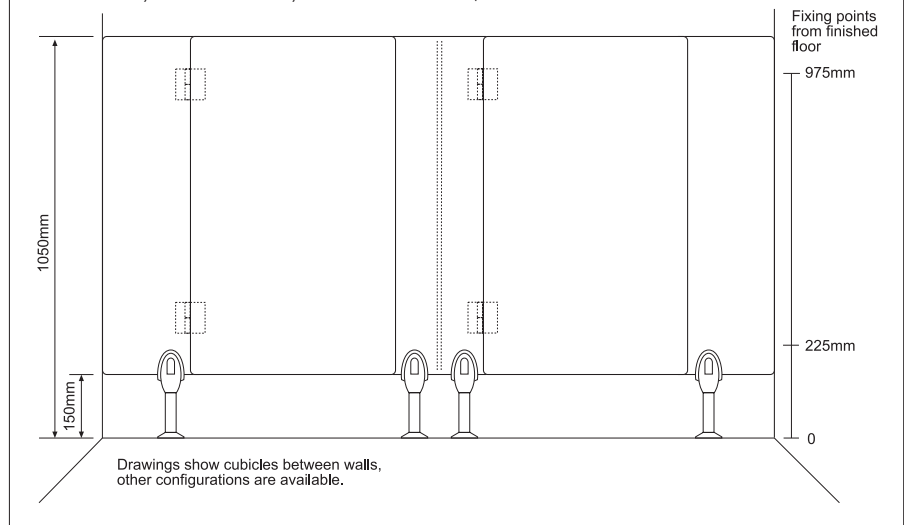
Our standard warranties are:

- 10 years Compact Laminate panel integrity.
- 2 years on hardware.
- 2 years on workmanship.

Resco KindyCube cubicle system - Indicative floor plans



Resco KindyCube cubicle system - Indicative front elevation



For further information contact Customer Services on **0800 800 950** or www.resco.co.nz.