

Product: Resco Series	Product Code: S-7000R
Installation Guide Return version. July 2017	

# RESCO

## *Series* **7000**

*Standard cubicle systems*

# Step-by-step Installation Guide

RETURN VERSION

JULY 2017

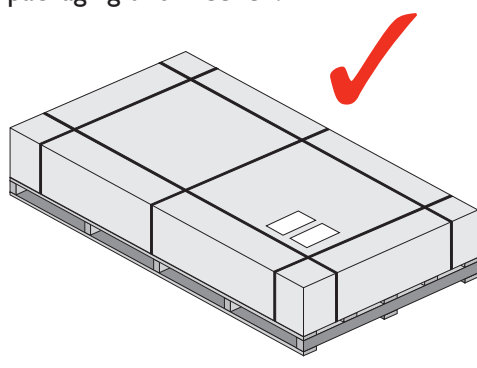
**IMPORTANT**

# SAFE PANEL HANDLING INSTRUCTIONS

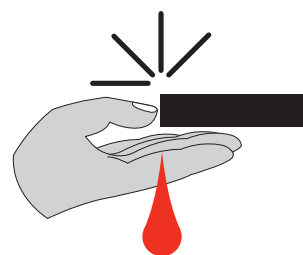


Although Compact Laminate panels are tough and durable, they must be treated with care. Panels can be damaged if not stored or handled properly during assembly.

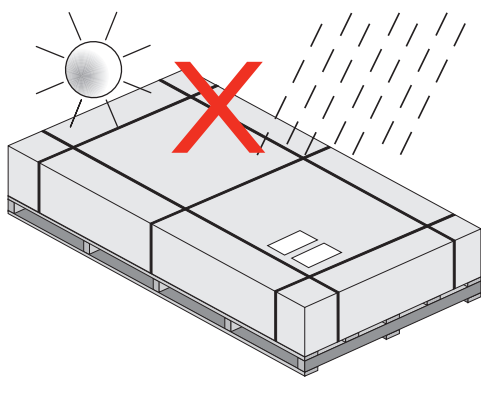
Store inside and keep in original packaging until needed.



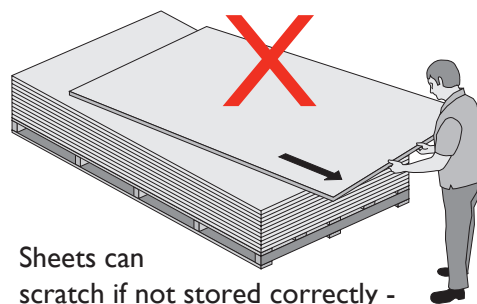
Use caution, machined edges may be razor sharp!



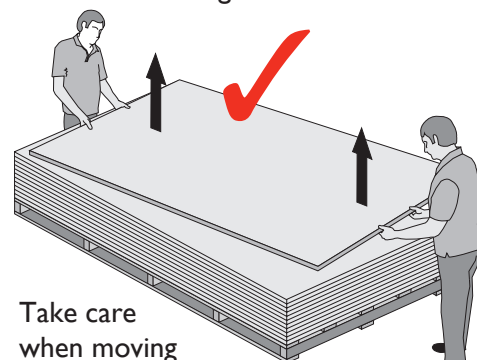
DO NOT store in sun or rain, or at high temperatures.



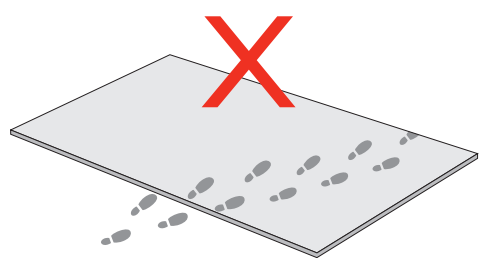
DO NOT slide panels - LIFT them!



2 MAN LIFT.  
Use suction lifting aids if available.



DO NOT walk-over.



# IMPORTANT

## CLEANING & MAINTENANCE OF COMPACT LAMINATE

Compact laminate is engineered to last for many years. We provide a 10 year guarantee on panel integrity.

The non-porous surface is easy to clean. The decorative surface and resin core of Compact Laminate is impervious and resistant to most commonly used cleaning agents and disinfectants.



### Recommended cleaning agents

Surfaces can be easily cleaned with a dry or damp cloth and if necessary a mild household cleaner.

- **General cleaning:** All-purpose cleaner (e.g. Ajax Spray & Wipe), household cleaners, water or soap are recommended.  
It is resistant to everyday wear and tear but needs some attention for harsh conditions and staining.
- **Spray paint:** Turpentine or SPC 801
- **Permanent marker:** Methylated spirits or SPC 801

### Never use any of the following on the panels, aluminium or hardware:

- Do not use abrasive or polishing materials. Abrasive cleaners such as Jif Cream Cleanser, Ajax (powder or liquid), Chemco, Brasso, Mr. Muscle oven cleaner or Scrub free.
- Scourer pads, Wire wool or Sandpaper.
- High pressure water cleaning or steam cleaning of panels is not recommended.
- Neat Janola or other equivalent brands of bleaches.
- Any product containing strong mineral acid such as sulphuric acid, Battery acid, hydrochloric acid, nitric acid or phosphoric acid. Commercial toilet cleaners, grout removers, descalants, rust removers, bleach, etc.
- Care must be taken where cleaning agents or solvents are highly acidic or alkaline as these may permanently damage the surface.

### Ongoing Maintenance:

- The use of CRC or equivalent on hinges and indicator bolts is recommended at least once every 3 months (sooner for challenging environments).
- An occasional re-finish of the exposed edges with an “off the shelf” wood-polish will rejuvenate the original polished seen edges.
- Any chemicals should be washed off so that they don’t keep working.
- Finger prints and other such surface marks can be neutralised with a silicone spray and a micro-fibre cloth.

See our Web site:

[www.resco.co.nz/product/multicom](http://www.resco.co.nz/product/multicom) - Cleaning instructions

For removal of graffiti – Please call our customer service team **0800 800 950**

## Step-by-step Installation Guide

Follow the installation instructions and reference numbered steps on the illustrations.

## IMPORTANT NOTES

- When screwing into compact you must pre-drill.
- Use low setting on your drills when screw fixing into Compact Laminate. Compact Laminate can break screws or damage the head if your drill is too powerful.
- Don't use hammer drills when installing into Compact Laminate.
- Compact Laminate and Aluminium can damage if not stored or treated properly – take care when you are moving sheets. Larger sheets require 2-man lift.
- The system will be packed so division panels are at the top and the doors are at the bottom.
- Use Diamond tip drill bits for drilling into tiles.
- Oversize Fascias – rivet infill in the middle (of the 2 other rivets on the other side) of the pedestal at the opposite side to ensure that the infill can't be moved.

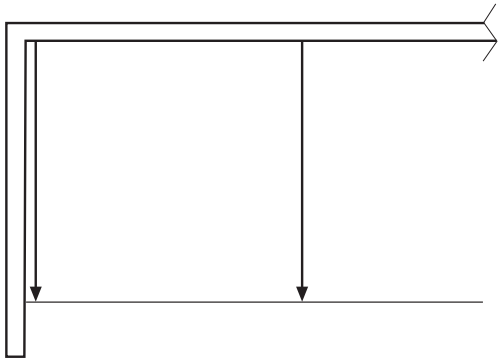
Sit in place and ensure that all the doors are perfect before final rivet. Therefore you can adjust. Ensure plumb both ways.

### Tools needed

- Level
- String line
- Chalk line
- Stool or small step ladder
- Timber blocks (155 mm)
- Timber wedges
- Rivet tool
- 3.5 mm drill bit
- 5 mm Masonry bit
- No. 1 Square drive
- No. 2 Pozi-drive
- Drop saw
- Nylon hammer
- Circular saw

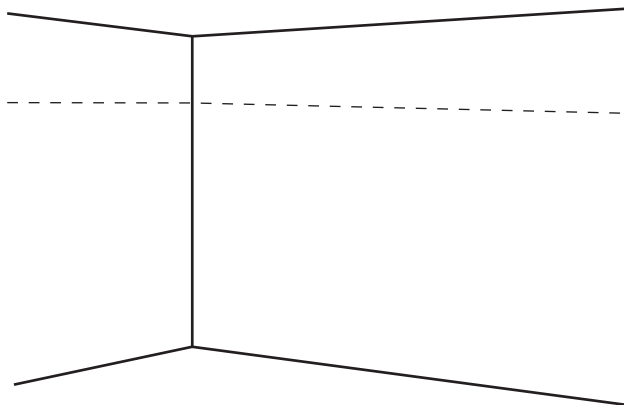
# Series 7000 RETURN VERSION

## Step 1



From the 'Resco Shop Drawings' mark the distance from the back wall to the front of the cubicles.

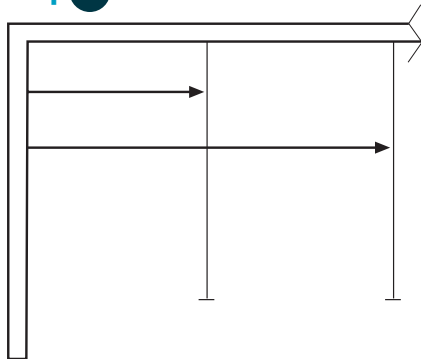
## Step 2



From the 'Resco Shop Drawings' mark the Datum on relevant walls. Ensure that the lowest point from the marks on step one is used for Datum line and transfer this to the relevant walls - otherwise posts could be too long, the system could be on an angle, or the Headrail height could be too low.

Note: on our proprietary system the Datum is normally 1960mm.

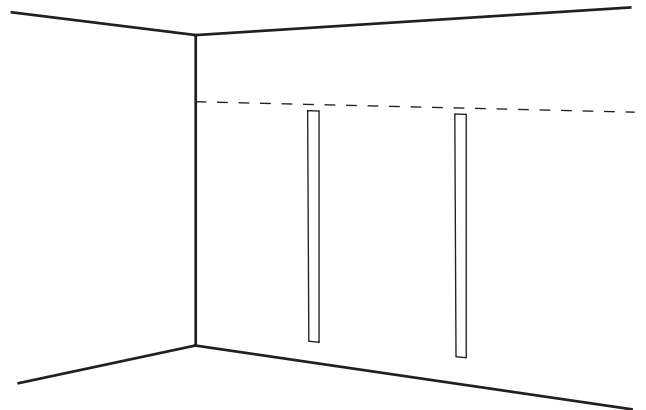
## Step 3



From the 'Resco Shop Drawings' mark the division centers on the back wall.

- a. Check location of toilets and ensure centered (these are sometimes fitted different to the plans).

## Step 4

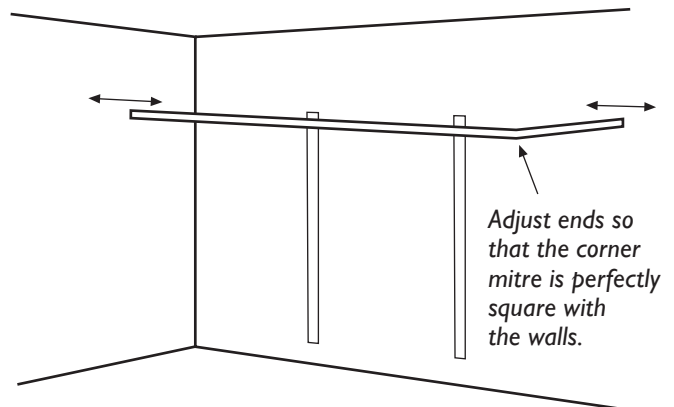


Fix back U-Channels (1748mm) centered on your marks, 52mm below the Datum line.

- a. The U-Channels are predrilled.  
Ensure screws go into wall frame.

**Use (A) 8GA x 32 screws (with a (F) plastic anchor if required)**

## Step 5



There is a gusset already fixed in the return Headrail. On the ground slot the front Headrail into position and fix (like the return Headrail) ensuring a perfect mitre.

Take care not to scratch the Headrails.

**Use (E) 8GA x 20 screws.**

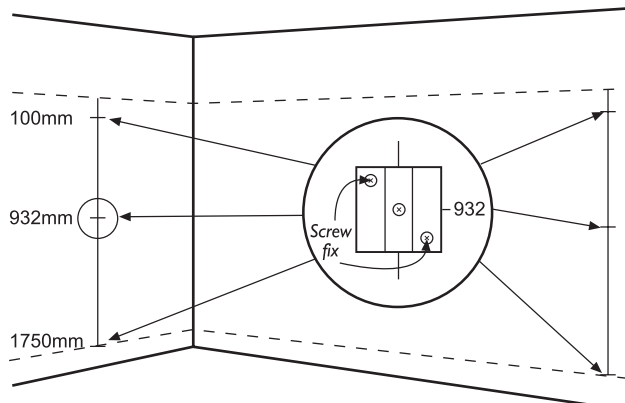
Hold Headrail in position to find where side and return (1795mm) 1/2 Stiles go.

Balance the difference (if any) between both 'side 1/2 Stile' and 'return 1/2 Stile' and mark centers to ensure perfect mitre cut.

Note: This adjustment allows for walls that are not at right angles.

# Series 7000 RETURN VERSION

## Step 6

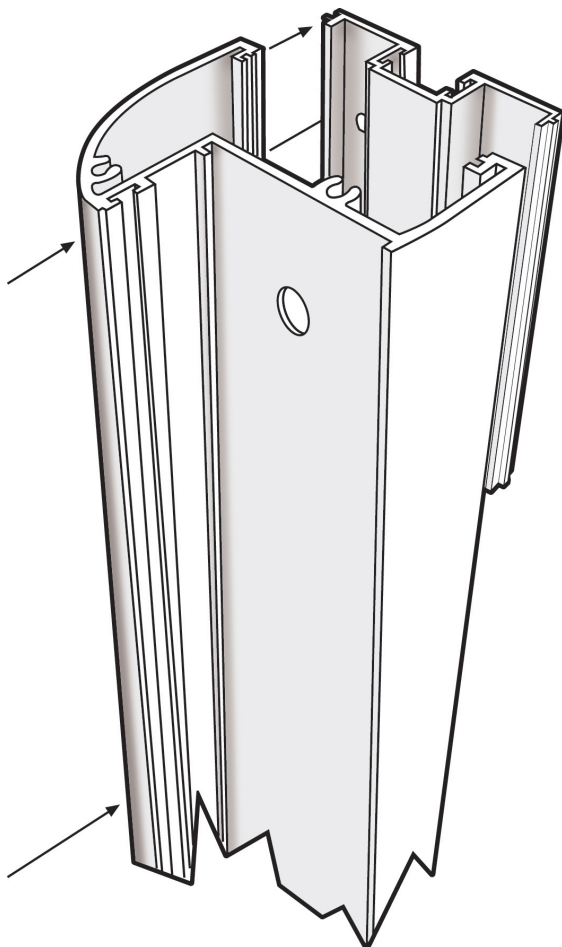


Fix 'side 1/2 Stile' and 'return 1/2 Stile' brackets at marks.

Plumb down from the Datum line and mark 100mm, 932mm, 1750mm.

- Hold the centre-hole of 1/2 Stile bracket at each mark. There are 3 brackets per Stile.
- Ensure bracket is level, then screw in the outside holes (angled back into the stud), leaving the centre hole free.

**Use (A) 8GA x 32 screws.**



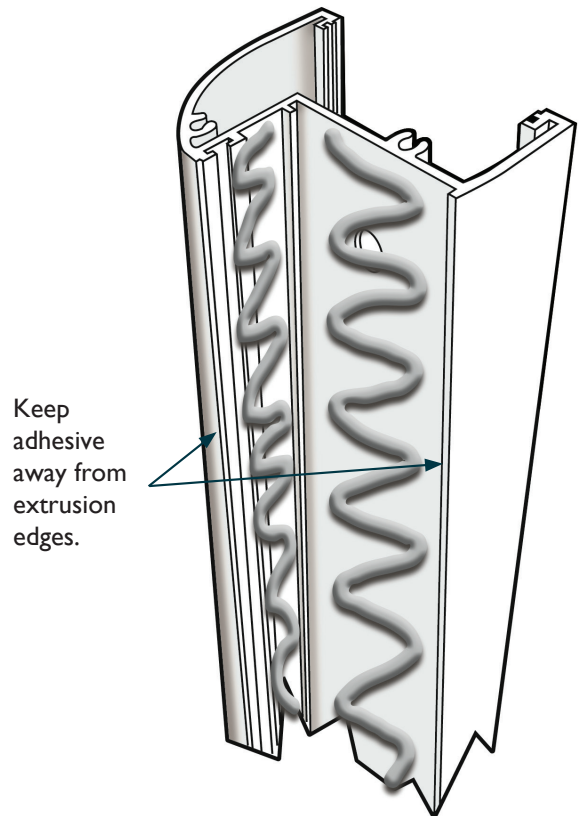
- Click the 1/2 Stiles on to the brackets with the top flush with the Datum-line.

- Fix 1/2 Stile through holes into the bracket

**Use (C) 8GA x 50 screws.**

Note: If 1/2 Stiles have hinges, hold the 1/2 Stile in place, at Datum, and mark on wall the centres of the hinges.

Attach brackets at marks to wall, then attach 1/2 Stile through the centre hinge holes, 3 per Stile.



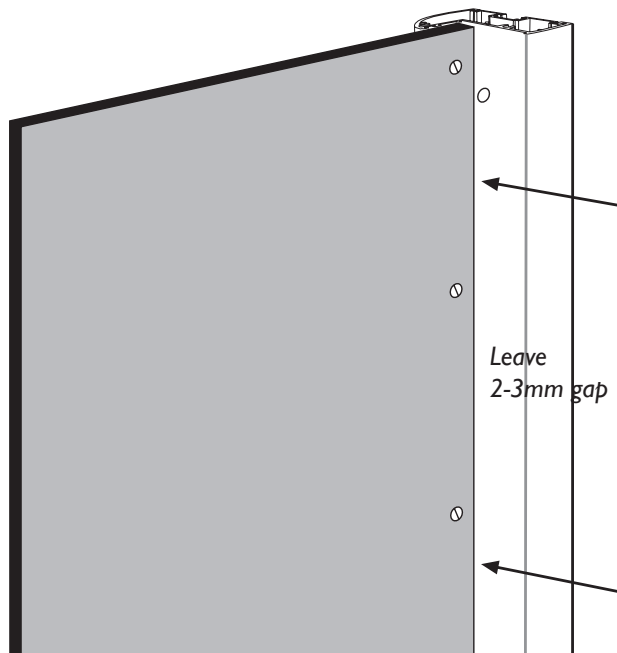
Place MS Polymer adhesive along the 1/2 Stile back and the side as shown. Only on the Return 1/2 Stile at this stage.

## Step 7

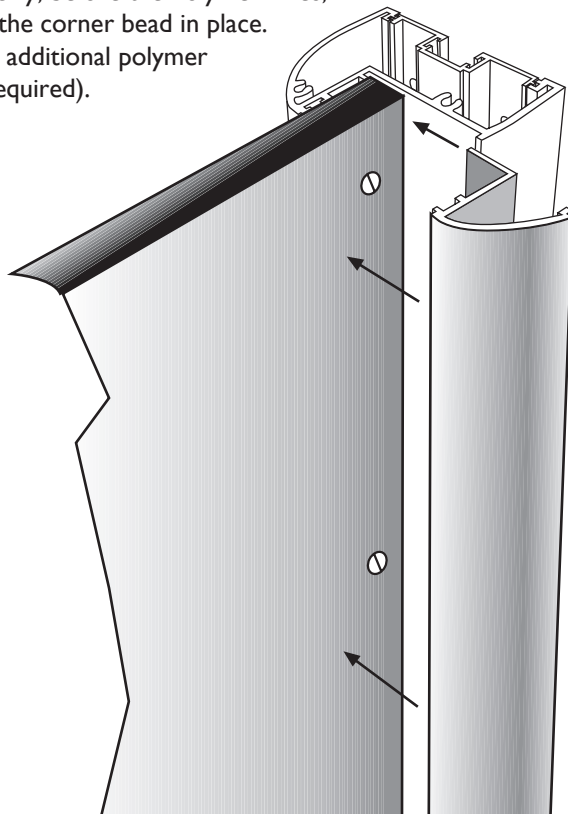
Place return panel on blocks, flush with the bottom of the ½ Stile. Screw fix in place, ensuring you leave a 2-3mm gap for the Aluminium bead to slot in.

**Use (A) 8GA x 32 screws.**

- Plumb and Fix in place at ½ Stile. Counter sink screws through panel into ½ Stile.
- Clip ½ Stile bead in place. Use Silicone to hold in place.



Quickly, before the Polymer dries, clip the corner bead in place. (use additional polymer as required).

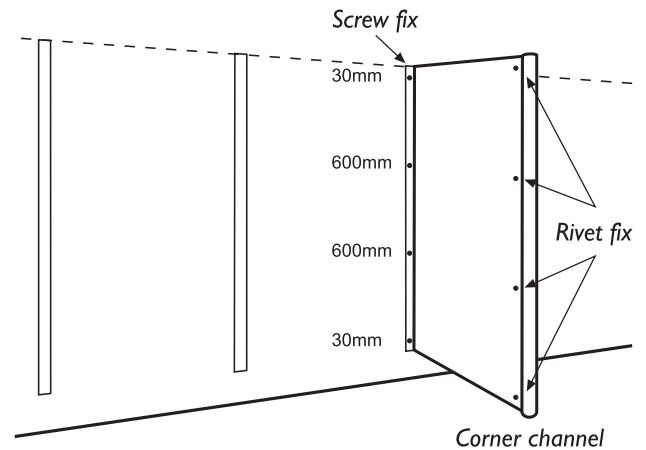


## Step 8

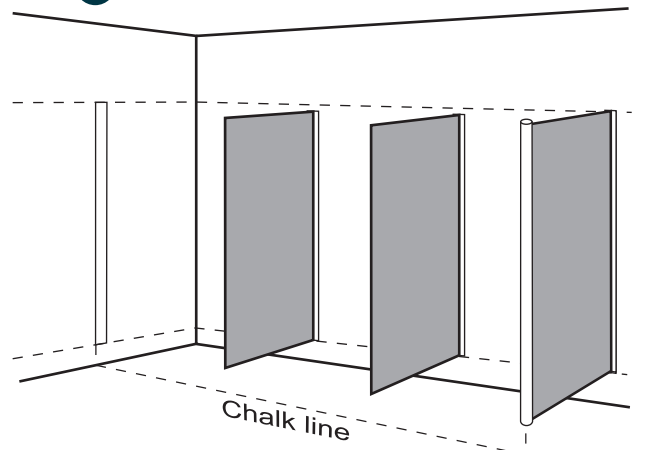
### Fix Corner Channel

Fix corner channel to return panel, leaving a 2mm gap, with 4 rivets.

**Use 3.5mm drill bit with (D) Stainless Steel Pop Rivets 30mm and 600mm from the top and the same from the bottom.**



## Step 9



Mark a 'front face' chalk line on the floor.

- Chalk line from the centre of the 'side wall' ½ Stile to the centre of the corner channel.
- Place division panels into rear U-Channels with 4x2 blocks underneath to make them level (wedges will be required).
- Adjust division panels so they are -15mm from the chalk line and aligned with the top of the U-Channel then fix.

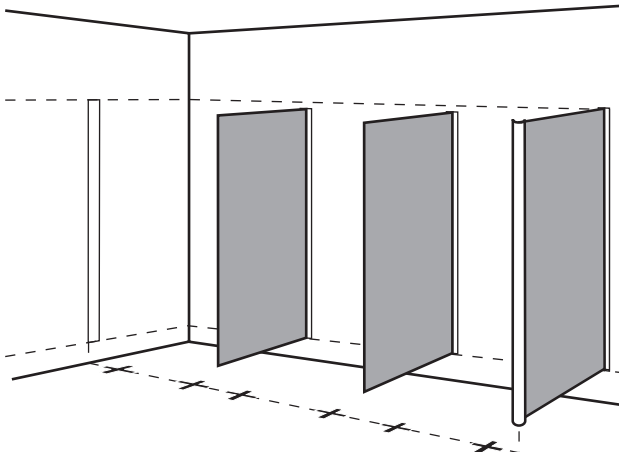
**Rivet through one side use 3.5mm drill bit with (D) Stainless Steel Pop Rivets 30mm and 600mm from the top and the same from the bottom.**

Note: Sometimes the back wall is not straight. This can be ok as you can either trim the division panels as required, or adjust the front face.

Just ensure you remark the chalk line and that it's straight, fits and looks good.

# Series 7000 RETURN VERSION

## Step 10



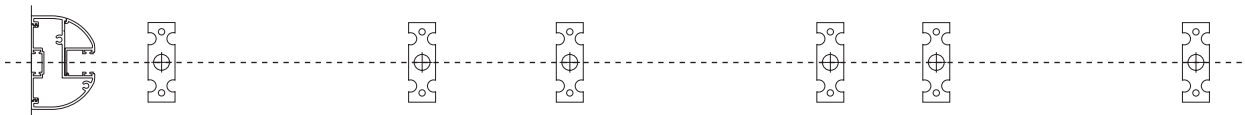
From the Resco shop drawings, mark the centers for the floor mount on the chalk line.

## Step 11

Drill the 2 side holes for the floor mounts and fix in place.

**Use 5mm masonry drill bit in concrete floor and 3.5mm drill bit in wood floor or a diamond drill bit for Tiles.**

**Place (F) plastic anchor in hole. Secure floor mount, using (A)8GA x 32 screws.**



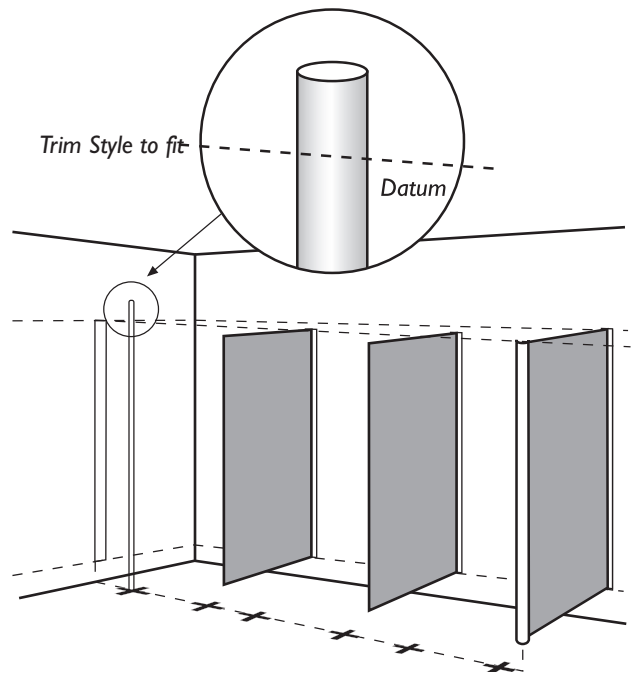
Floor mount brackets located in position. (Indicative only. Not to scale.)

## Step 12

### Full-Stiles

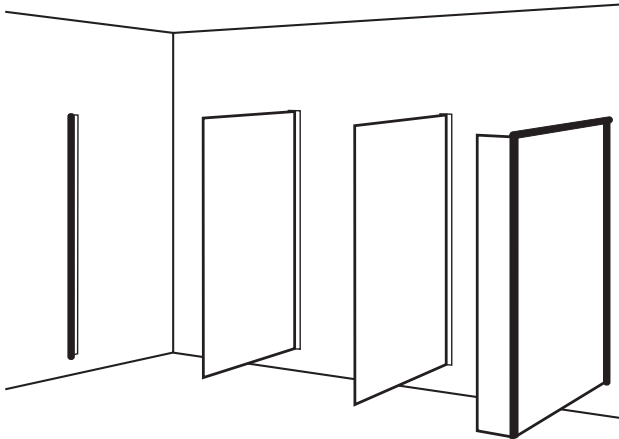
Use a laser level (or string line) between the tops of the 1/2 Stiles.

- a. Trim all Stiles to height, by putting each Stile upside down over the appropriate floor mount, mark and then trim.





## Step 13



Hold in place corner channel Fascia with one rivet flush with the bottom and then plumb.

**Use 3.5mm drill bit with (D) Stainless Steel Pop Rivet 30mm from the top.**

Sit in place the Return Headrail.

- Ensure the Headrail is touching the walls perfectly.
- Drill 3.5mm holes, 200mm apart through the head rail and into the top of the return panel.  
Be careful not to drill through the side of the panel.

**Use a 3.5mm drill and fix with (E) 8GA x 20 counter sunk screws.**

## Step 14

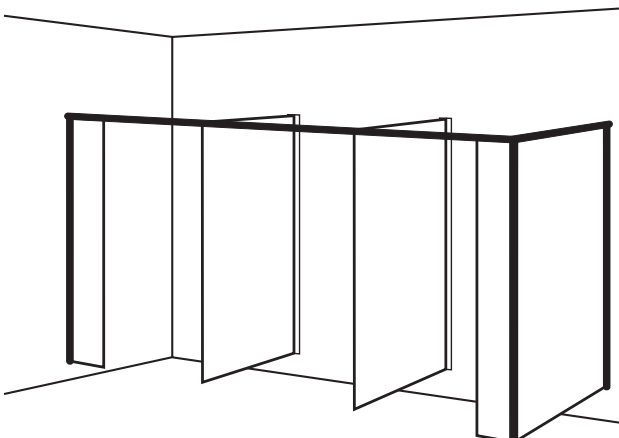
Install wall 1/2 Stile Fascia using Polymer as you did for the Return panel in Steps 6 and 7.

## Step 15

**Headrail - Sit in place.**

- Ensure the Headrail is touching the walls perfectly.  
The mitre should be perfect from the earlier step.
- Fix Headrail to side 1/2 Stiles.

**Use 3.5mm drill bit with (D) Stainless Steel Pop Rivets.**



## T-JOIN JOINTERS

From the Resco shop drawings, mark the front of the cubicle where the T-join will go.

Fix the 1/2 Stile to the relevant cubicle wall as you would in step 6.

This will have to be drilled on site so ensure that you don't drill through the panel.

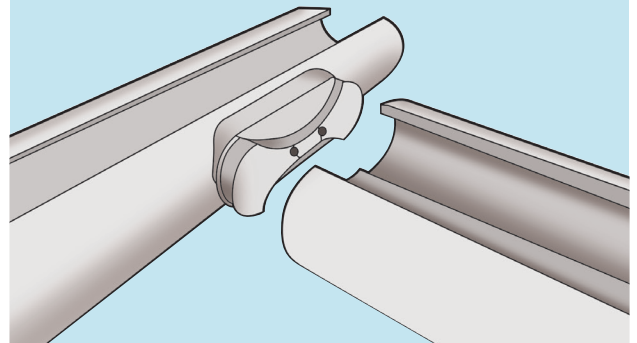
**Use a 3.5mm drill bit.**

**Fix using (B) 8GA x 12 screws.**

Fix the T-join Joints in position centered above the 1/2 Stile or U-Channel and fix through the holes into the Headrail.

**Use (A) 8GA x 32 screws**

Trim the Headrail to suit and place on the top of the 1/2 Stiles and fix in place as you would in the main instructions.

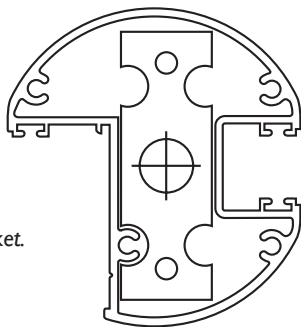


# Series 7000 RETURN VERSION

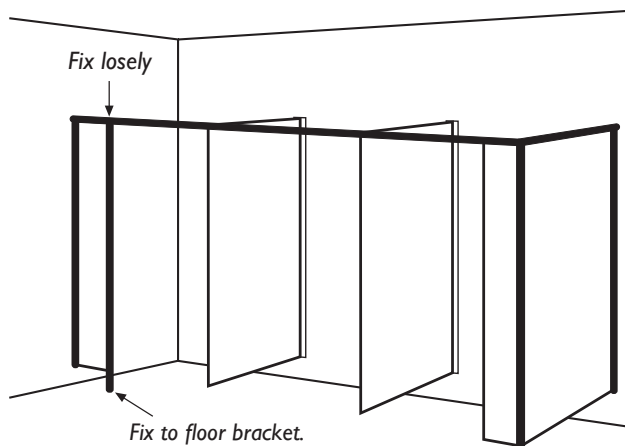
## Step 16

Place the first Stile over the appropriate floor mount bracket.

Check the Resco shop drawings to ensure that the Stile is orientated correctly.



Stile mounted over the floor bracket.  
(Not to scale).

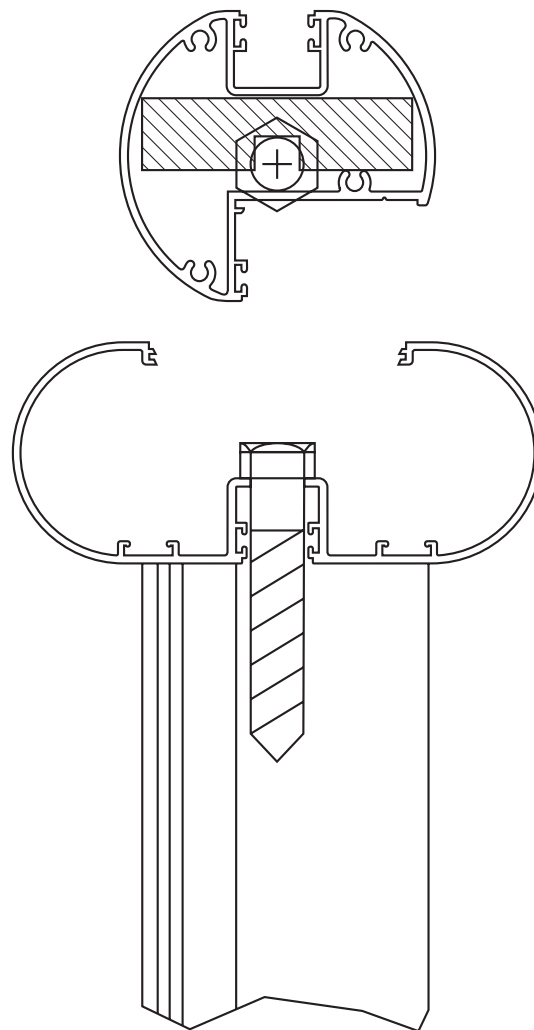


- a. Make sure it sits flush on the floor then rivet through the Stile into the floor block.

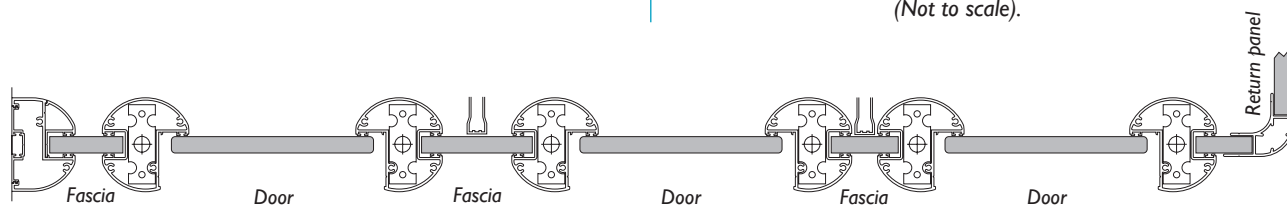
**Use 3.5mm drill bit with (D) Stainless Steel Pop Rivets.**

- b. Fix the top (loosely) through the Headrails predrilled holes into the Full Stile bracket.

**Use 1 x 70mm Coach screw.**

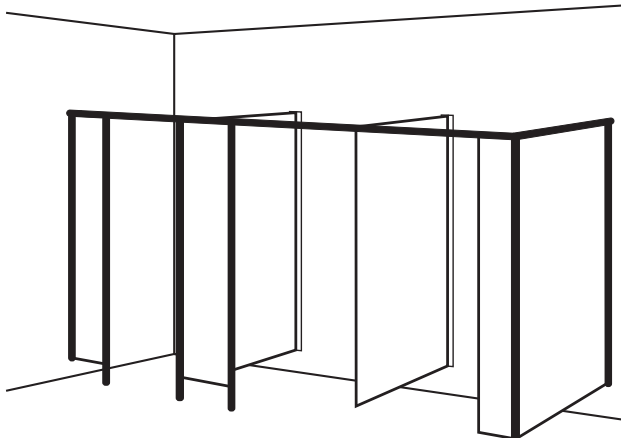


Headrail connecting into the Full Stile.  
(Not to scale).



Full Stiles located in position over the floor mount brackets. (Indicative only. Not to scale.)

## Step 17



Place the next Stile into position and fix in place. Check the 'Resco shop drawings' to ensure that the Stile is orientated correctly.

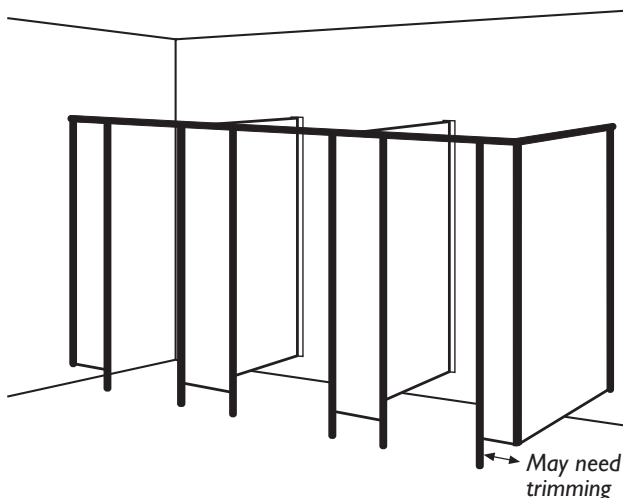
Insert appropriate Fascia and align U-Channel with corresponding division panel.

Apply 4 blobs of silicon in Stile pocket to prevent panel rattling in the future.

- a. Move Fascia (and division panel) sideways across into fixed Stile pocket.
- b. Ensure pushed hard into Headrail and put block under Fascia to maintain height.
- c. Slip second Stile onto the other side of the Fascia, by placing it orientated correctly over the floor mount.
- d. Move the top-end in to position above the coach screw.
- e. Fix loosely for now to Headrail.

**Use 1 x 70mm Coach screw.**

## Step 18

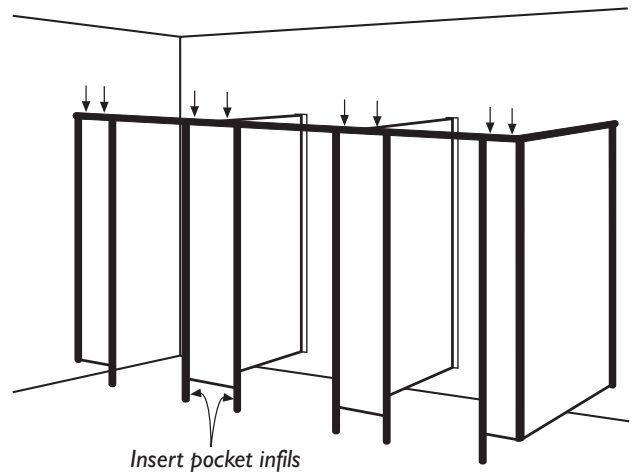


Repeat for the remaining Stiles and Fascias – Check the last Fascia before fixing as it may need trimming.

To trim use a tungsten tipped blade.

Tighten up all of the Headrail coach bolts.

## Step 19



Fix Fascia panels in place, Rivet through Headrail into the top of the Fascia every 200mm.

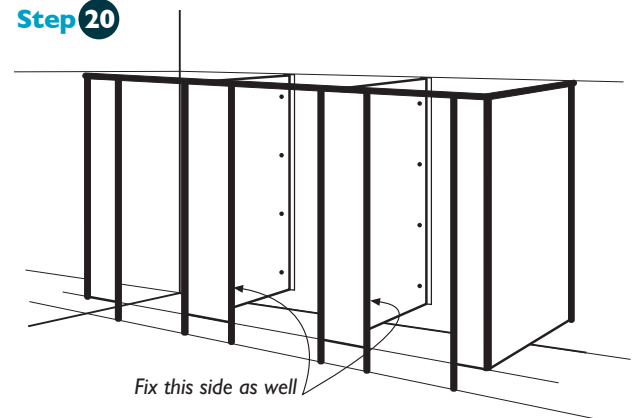
Note: Ensure you don't drill through the side of the panel.

**Use a 3.5mm drill and fix with (E) 8GA x 20 counter sunk screws.**

Place pocket-infills to fill pockets between the finished floor and the bottom of the panels. These may need trimming if Stiles have been shortened.

Clip into place.

## Step 20



Fix division panels.

- a. Ensure all division panels line up with the bottom of each U-Channel.
- b. Drill 4 x holes on one side of each U-Channel.

**Use 3.5mm drill bit with (D) Stainless Steel Pop Rivets 30mm and 600mm from the top and the same from the bottom.**

## Step 21 Hang doors

Lining up the hinges attached to each stile with the predrilled holes on the doors, hang the doors.

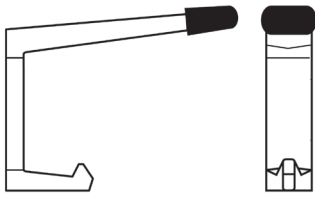
**Use the supplied (B) 8GA x 12 screws.**

## Step 22 Fit hardware

### COAT HOOK

Line up the coat hook with the pre-drilled holes in the doors and screw on.

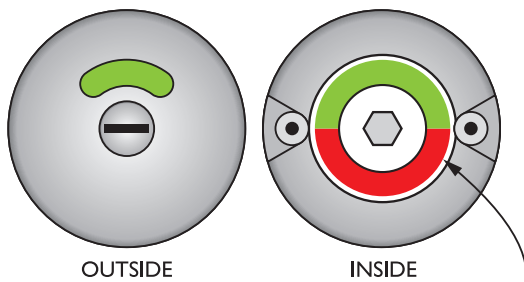
**Use (B) 8GA x 12 screws.**



Fix the indicator bolt in the pre-drilled position.

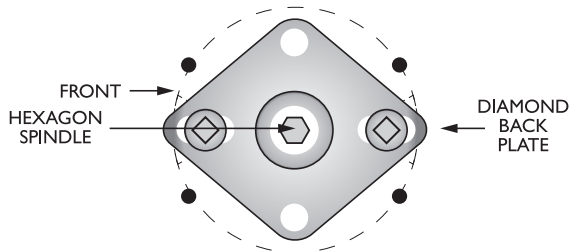
### INDICATOR BOLT

#### Step 01 - Front Component



Insert the green and red plate into the inside of the front component of the indicator bolt.

#### Step 02 - Diamond Back Plate



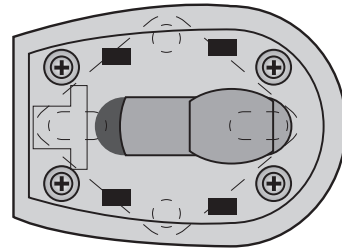
Fix the front part of the indicator bolt to the outside of the door using the diamond back plate on the inside of the door.

**Use 2 x 8g x 1/2 screws.**

Insert the hexagon shaped spindle into the front plate from the inside.

Check the indicator is green and then check the bolt lock is in the Open position.

#### Step 03 - Inside Bolt

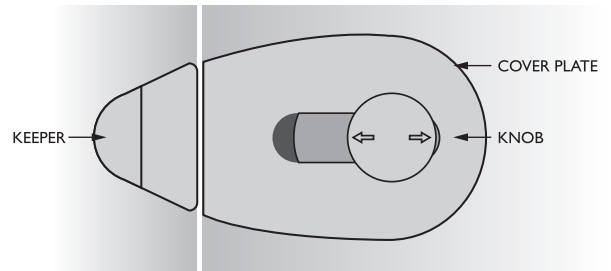


Screw the inside bolt component onto the inside of the door over the Diamond Back Plate.

**Use 4 x 6g x 20mm screws.**

Check that the lock can slide back and forth smoothly. In case it jams it means that the hexagon spindle is not perfectly perpendicular. You will need to gently slide the front of the indicator left/right.

#### Step 04 - Coverplate, Knob & Keeper



Then clip on the cover plate. Push on the knob and tighten the grub screws with the allen key supplied. A keeper will already be installed on the Stile.

#### Step 23 Clean Panels

Clean all components, including pencil marks on the floor and walls.

Sweep the floor and remove rubbish.

Wipe down with soapy water.

# RESCO

Resco Limited.  
12 Kahu Crescent  
Te Rapa Park, Hamilton 3200. New Zealand  
Phone: 0800 800 950, +64 850 1025  
Fax: +64 7 850 1026  
(www.resco.co.nz)

©Resco April 2017

# RESCO